
Product Name: MEK Kinase-6 Rabbit Polyclonal Antibody**Catalog #: APRab13795**

For research use only.

Summary

Description	Rabbit polyclonal Antibody
Host	Rabbit
Application	IHC,ICC/IF,ELISA
Reactivity	Human,Mouse
Conjugation	Unconjugated
Modification	Unmodified
Isotype	IgG
Clonality	Polyclonal
Form	Liquid
Concentration	1mg/ml
Storage	Aliquot and store at -20°C (valid for 12 months). Avoid freeze/thaw cycles.
Shipping	Ice bags
Buffer	Liquid in PBS containing 50% glycerol, 0.5% protective protein and 0.02% New type preservative N.
Purification	Affinity purification

Application

Dilution Ratio IHC 1:100-1:300,ICC/IF 1:50-1:200,ELISA 1:5000-1:10000

Molecular Weight

Antigen Information

Gene Name	MAP3K6
Alternative Names	MAP3K6; ASK2; MAPKKK6; MEKK6; Mitogen-activated protein kinase kinase kinase 6; Apoptosis signal-regulating kinase 2
Gene ID	9064.0
SwissProt ID	O95382
Immunogen	The antiserum was produced against synthesized peptide derived from human MAP3K6. AA range:281-330

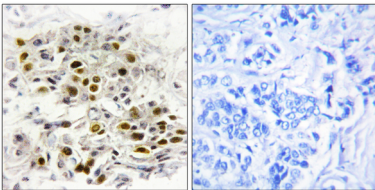
Background

This gene encodes a serine/threonine protein kinase that forms a component of protein kinase-mediated signal transduction cascades. The encoded kinase participates in the regulation of vascular endothelial growth factor (VEGF) expression. Alternative splicing results in multiple transcript variants. [provided by RefSeq, Jul 2014],catalytic activity:ATP + a protein = ADP + a phosphoprotein.,cofactor:Magnesium.,enzyme regulation:Activated by phosphorylation on Thr-806. Catalytically active only when complexed with MAP3K5, with MAP3K5 supporting the stability and the active configuration of MAP3K6 and MAP3K6 activating MAP3K5 by direct phosphorylation.,function:Component of a protein kinase signal transduction cascade. Activates the JNK, but not ERK or p38 kinase pathways.,similarity:Belongs to the protein kinase superfamily.,similarity:Belongs to the protein kinase superfamily. STE Ser/Thr protein kinase family. MAP kinase kinase kinase subfamily.,similarity:Contains 1 protein kinase domain.,subunit:Binds both upstream activators and downstream substrates in multimolecular complexes.,

Research Area

SAPK_JNK; Regulation of Actin Dynamics; Cell Growth; Stem cell pathway; Cell_Cycle_G1S;Cell_Cycle_G2M_DNA; MAPK_ERK_Growth;MAPK_G_Protein; B Cell Receptor

Image Data



Immunohistochemistry analysis of paraffin-embedded human breast carcinoma tissue, using MAP3K6 Antibody. The picture on the right is blocked with the synthesized peptide.