
Product Name: MCT13 Rabbit Polyclonal Antibody**Catalog #: APRab13740**

For research use only.

Summary

Description	Rabbit polyclonal Antibody
Host	Rabbit
Application	WB,ELISA
Reactivity	Human,Rat,Mouse
Conjugation	Unconjugated
Modification	Unmodified
Isotype	IgG
Clonality	Polyclonal
Form	Liquid
Concentration	1mg/ml
Storage	Aliquot and store at -20°C (valid for 12 months). Avoid freeze/thaw cycles.
Shipping	Ice bags
Buffer	Liquid in PBS containing 50% glycerol, 0.5% protective protein and 0.02% New type preservative N.
Purification	Affinity purification

Application

Dilution Ratio	WB 1:500-1:2000,ELISA 1:5000-1:10000
Molecular Weight	40kDa

Antigen Information

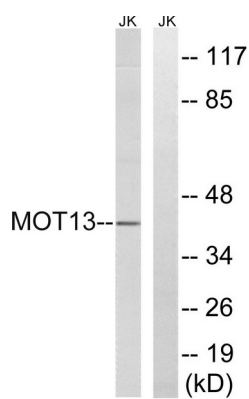
Gene Name	SLC16A13
Alternative Names	SLC16A13; MCT13; Monocarboxylate transporter 13; MCT 13; Solute carrier family 16 member 13
Gene ID	201232.0
SwissProt ID	Q7RTY0
Immunogen	The antiserum was produced against synthesized peptide derived from human MOT13. AA range:377-426

Background

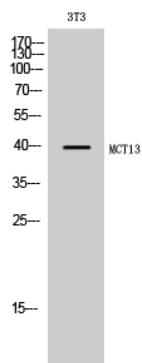
function:Proton-linked monocarboxylate transporter. Catalyzes the rapid transport across the plasma membrane of many monocarboxylates.,similarity:Belongs to the major facilitator superfamily. Monocarboxylate porter (TC 2.A.1.13) family.,function:Proton-linked monocarboxylate transporter. Catalyzes the rapid transport across the plasma membrane of many monocarboxylates.,similarity:Belongs to the major facilitator superfamily. Monocarboxylate porter (TC 2.A.1.13) family.,

Research Area

Image Data



Western blot analysis of lysates from Jurkat cells, using MOT13 Antibody. The lane on the right is blocked with the synthesized peptide.



Western Blot analysis of 3T3 cells using MCT13 Polyclonal Antibody