
Product Name: MCP-3 Rabbit Polyclonal Antibody**Catalog #: APRab13734**

For research use only.

Summary

Description	Rabbit polyclonal Antibody
Host	Rabbit
Application	IHC,ICC/IF,ELISA
Reactivity	Human,Rat,Mouse
Conjugation	Unconjugated
Modification	Unmodified
Isotype	IgG
Clonality	Polyclonal
Form	Liquid
Concentration	1mg/ml
Storage	Aliquot and store at -20°C (valid for 12 months). Avoid freeze/thaw cycles.
Shipping	Ice bags
Buffer	Liquid in PBS containing 50% glycerol, 0.5% protective protein and 0.02% New type preservative N.
Purification	Affinity purification

Application

Dilution Ratio IHC 1:50-1:200,ICC/IF 1:50-1:200,ELISA 1:10000-1:20000

Molecular Weight

Antigen Information

Gene Name	CCL7 MCP3 SCYA6 SCYA7
Alternative Names	C-C motif chemokine 7 (Monocyte chemoattractant protein 3;Monocyte chemotactic protein 3;MCP-3;NC28;Small-inducible cytokine A7)
Gene ID	6354.0
SwissProt ID	P80098
Immunogen	Synthetic peptide from human protein at AA range: 50-99

Background

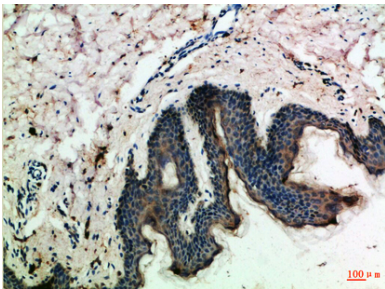
This gene encodes monocyte chemotactic protein 3, a secreted chemokine which attracts macrophages during inflammation

and metastasis. It is a member of the C-C subfamily of chemokines which are characterized by having two adjacent cysteine residues. The protein is an in vivo substrate of matrix metalloproteinase 2, an enzyme which degrades components of the extracellular matrix. This gene is part of a cluster of C-C chemokine family members on chromosome 17q. [provided by RefSeq, Jul 2008],function:Chemotactic factor that attracts monocytes and eosinophils, but not neutrophils. Augments monocyte anti-tumor activity. Also induces the release of gelatinase B. This protein can bind heparin. Binds to CCR1, CCR2 and CCR3.,online information:CCL7 entry,PTM:O-glycosylated.,similarity:Belongs to the intercrine beta (chemokine CC) family.,subunit:Monomer.,

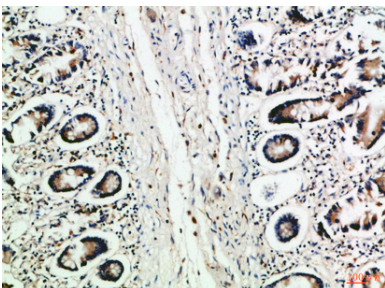
Research Area

Cytokine-cytokine receptor interaction;Chemokine;NOD-like receptor;

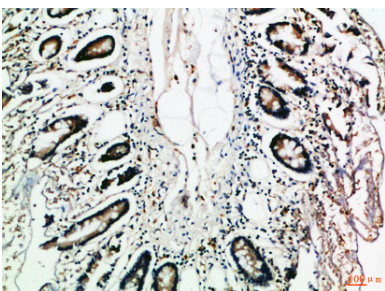
Image Data



Immunohistochemical analysis of paraffin-embedded Human-skin, antibody was diluted at 1:100



Immunohistochemical analysis of paraffin-embedded Human-colon, antibody was diluted at 1:100



Immunohistochemical analysis of paraffin-embedded Human-colon, antibody was diluted at 1:100