

---

**Product Name: MCM7 Rabbit Polyclonal Antibody****Catalog #: APRab13728**

For research use only.

**Summary**

<b>Description</b>	Rabbit polyclonal Antibody
<b>Host</b>	Rabbit
<b>Application</b>	WB,IHC,ICC/IF,ELISA
<b>Reactivity</b>	Human,Mouse,Rat
<b>Conjugation</b>	Unconjugated
<b>Modification</b>	Unmodified
<b>Isotype</b>	IgG
<b>Clonality</b>	Polyclonal
<b>Form</b>	Liquid
<b>Concentration</b>	1mg/ml
<b>Storage</b>	Aliquot and store at -20°C (valid for 12 months). Avoid freeze/thaw cycles.
<b>Shipping</b>	Ice bags
<b>Buffer</b>	Liquid in PBS containing 50% glycerol, 0.5% protective protein and 0.02% New type preservative N.
<b>Purification</b>	Affinity purification

**Application**

<b>Dilution Ratio</b>	WB 1:500-1:2000,IHC 1:100-1:300,ICC/IF 1:50-1:200,ELISA 1:10000-1:20000
<b>Molecular Weight</b>	81kDa

**Antigen Information**

<b>Gene Name</b>	MCM7
<b>Alternative Names</b>	MCM7; CDC47; MCM2; DNA replication licensing factor MCM7; CDC47 homolog; P1.1-MCM3
<b>Gene ID</b>	4176.0
<b>SwissProt ID</b>	P33993
<b>Immunogen</b>	The antiserum was produced against synthesized peptide derived from the Internal region of human MCM7. AA range:491-540

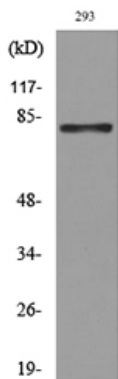
**Background**

The protein encoded by this gene is one of the highly conserved mini-chromosome maintenance proteins (MCM) that are essential for the initiation of eukaryotic genome replication. The hexameric protein complex formed by the MCM proteins is a key component of the pre-replication complex (pre\_RC) and may be involved in the formation of replication forks and in the recruitment of other DNA replication related proteins. The MCM complex consisting of this protein and MCM2, 4 and 6 proteins possesses DNA helicase activity, and may act as a DNA unwinding enzyme. Cyclin D1-dependent kinase, CDK4, is found to associate with this protein, and may regulate the binding of this protein with the tumoursuppressor protein RB1/RB. Alternatively spliced transcript variants encoding distinct isoforms have been reported. [provided by RefSeq, Jul 2008],function:Acts as a factor that allows the DNA to undergo a single round of replication per cell cycle. Required for DNA replication and cell proliferation. Required for S-phase checkpoint activation upon UV-induced damage.,PTM:Phosphorylated upon DNA damage, probably by ATM or ATR.,similarity:Belongs to the MCM family.,similarity:Contains 1 MCM domain.,subunit:Interacts with the ATR-ATRIP complex and with RAD17. Interacts with TIPIN,

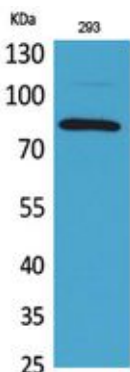
## Research Area

DNA replication;Cell\_Cycle\_G1S;Cell\_Cycle\_G2M\_DNA;

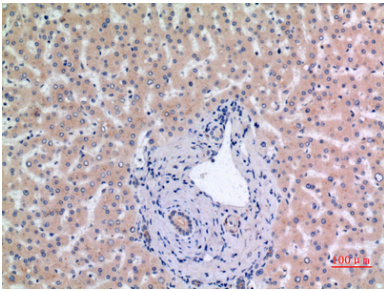
## Image Data



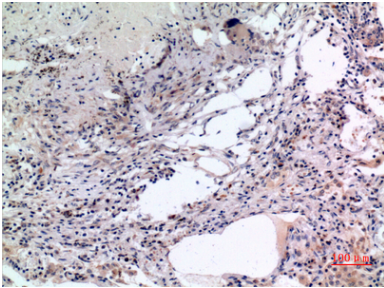
Western blot analysis of lysate from 293 cells, using MCM7 Antibody.



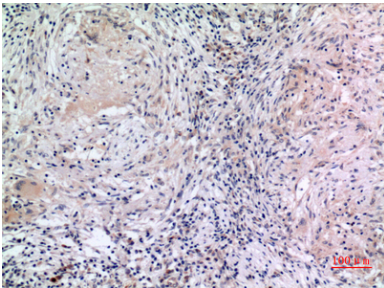
Western Blot analysis of 293 cells using MCM7 Polyclonal Antibody.. Secondary antibody was diluted at 1:20000



Immunohistochemical analysis of paraffin-embedded human-liver, antibody was diluted at 1:100



Immunohistochemical analysis of paraffin-embedded human-lung, antibody was diluted at 1:100



Immunohistochemical analysis of paraffin-embedded human-lung, antibody was diluted at 1:100