
Product Name: MCM4 Rabbit Polyclonal Antibody**Catalog #: APRab13722**

For research use only.

Summary

| | |
|----------------------|---|
| Description | Rabbit polyclonal Antibody |
| Host | Rabbit |
| Application | WB,IHC,ICC/IF,ELISA |
| Reactivity | Human,Mouse |
| Conjugation | Unconjugated |
| Modification | Unmodified |
| Isotype | IgG |
| Clonality | Polyclonal |
| Form | Liquid |
| Concentration | 1mg/ml |
| Storage | Aliquot and store at -20°C (valid for 12 months). Avoid freeze/thaw cycles. |
| Shipping | Ice bags |
| Buffer | Liquid in PBS containing 50% glycerol, 0.5% protective protein and 0.02% New type preservative N. |
| Purification | Affinity purification |

Application

| | |
|-------------------------|---|
| Dilution Ratio | WB 1:500-1:2000,IHC 1:100-1:300,ICC/IF 1:50-1:200,ELISA 1:10000-1:20000 |
| Molecular Weight | 96kDa |

Antigen Information

| | |
|--------------------------|--|
| Gene Name | MCM4 |
| Alternative Names | MCM4; CDC21; DNA replication licensing factor MCM4; CDC21 homolog; P1-CDC21 |
| Gene ID | 4173.0 |
| SwissProt ID | P33991 |
| Immunogen | The antiserum was produced against synthesized peptide derived from human MCM4. AA range:20-69 |

Background

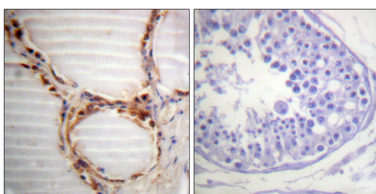
The protein encoded by this gene is one of the highly conserved mini-chromosome maintenance proteins (MCM) that are

essential for the initiation of eukaryotic genome replication. The hexameric protein complex formed by MCM proteins is a key component of the pre-replication complex (pre_RC) and may be involved in the formation of replication forks and in the recruitment of other DNA replication related proteins. The MCM complex consisting of this protein and MCM2, 6 and 7 proteins possesses DNA helicase activity, and may act as a DNA unwinding enzyme. The phosphorylation of this protein by CDC2 kinase reduces the DNA helicase activity and chromatin binding of the MCM complex. This gene is mapped to a region on the chromosome 8 head-to-head next to the PRKDC/DNA-PK, a DNA-activated protein kinase involved in the repair of DNA double-strand breaks. Alternatively spliced transcripfunction:Involved in the control of DNA replication.,similarity:Belongs to the MCM family.,similarity:Contains 1 MCM domain.,

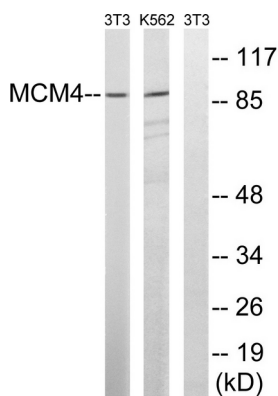
Research Area

DNA replication;Cell_Cycle_G1S;Cell_Cycle_G2M_DNA;

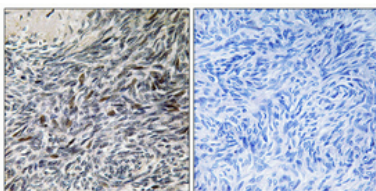
Image Data



Immunohistochemistry analysis of paraffin-embedded human testis tissue, using MCM4 Antibody. The picture on the right is blocked with the synthesized peptide.



Western blot analysis of lysates from NIH/3T3 and K562 cells, using MCM4 Antibody. The lane on the right is blocked with the synthesized peptide.



Immunohistochemical analysis of paraffin-embedded Human ovary. Antibody was diluted at 1:100 (4°,overnight) . High-pressure and temperature Tris-EDTA,pH8.0 was used for antigen retrieval. Negative contrl (right) obtained from antibody was pre-absorbed by immunogen peptide.