
Product Name: MCM3 Rabbit Polyclonal Antibody**Catalog #: APRab13720**

For research use only.

Summary

Description	Rabbit polyclonal Antibody
Host	Rabbit
Application	WB,IHC,ICC/IF,ELISA
Reactivity	Human,Rat,Mouse
Conjugation	Unconjugated
Modification	Unmodified
Isotype	IgG
Clonality	Polyclonal
Form	Liquid
Concentration	1mg/ml
Storage	Aliquot and store at -20°C (valid for 12 months). Avoid freeze/thaw cycles.
Shipping	Ice bags
Buffer	Liquid in PBS containing 50% glycerol, 0.5% protective protein and 0.02% New type preservative N.
Purification	Affinity purification

Application

Dilution Ratio	WB 1:500-1:2000,IHC 1:100-1:300,ICC/IF 1:50-1:200,ELISA 1:10000-1:20000
Molecular Weight	89kDa

Antigen Information

Gene Name	MCM3
Alternative Names	MCM3; DNA replication licensing factor MCM3; DNA polymerase alpha holoenzyme-associated protein P1; P1-MCM3; RLF subunit beta; p102
Gene ID	4172.0
SwissProt ID	P25205
Immunogen	The antiserum was produced against synthesized peptide derived from the Internal region of human MCM3. AA range:641-690

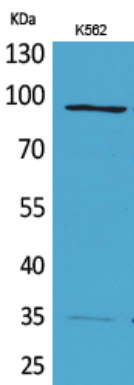
Background

The protein encoded by this gene is one of the highly conserved mini-chromosome maintenance proteins (MCM) that are involved in the initiation of eukaryotic genome replication. The hexameric protein complex formed by MCM proteins is a key component of the pre-replication complex (pre_RC) and may be involved in the formation of replication forks and in the recruitment of other DNA replication related proteins. This protein is a subunit of the protein complex that consists of MCM2-7. It has been shown to interact directly with MCM5/CDC46. This protein also interacts with and is acetylated by MCM3AP, a chromatin-associated acetyltransferase. The acetylation of this protein inhibits the initiation of DNA replication and cell cycle progression. Two transcript variants encoding different isoforms have been found for this gene. [provided by RefSeq, Jul 2012],function:Acts as a factor that allows the DNA to undergo a single round of replication per cell cycle. Required for DNA replication and cell proliferation.,miscellaneous:Associated with the replication-specific DNA polymerase alpha.,PTM:Phosphorylated upon DNA damage, probably by ATM or ATR.,similarity:Belongs to the MCM family.,similarity:Contains 1 MCM domain.,

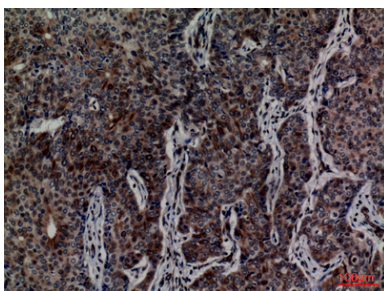
Research Area

DNA replication;Cell_Cycle_G1S;Cell_Cycle_G2M_DNA;

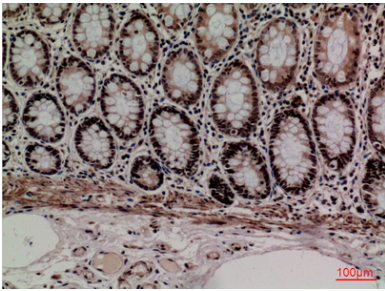
Image Data



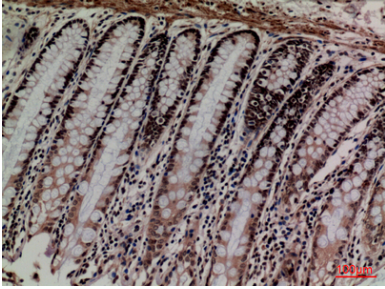
Western Blot analysis of K562 cells using MCM3 Polyclonal Antibody.. Secondary antibody was diluted at 1:20000



Immunohistochemical analysis of paraffin-embedded human-breast-cancer, antibody was diluted at 1:100



Immunohistochemical analysis of paraffin-embedded human-colon, antibody was diluted at 1:100



Immunohistochemical analysis of paraffin-embedded human-colon, antibody was diluted at 1:100