

---

**Product Name: MAZ Rabbit Polyclonal Antibody****Catalog #: APRab13677**

For research use only.

**Summary**

<b>Description</b>	Rabbit polyclonal Antibody
<b>Host</b>	Rabbit
<b>Application</b>	WB,IHC,ELISA
<b>Reactivity</b>	Human,Mouse,Rat
<b>Conjugation</b>	Unconjugated
<b>Modification</b>	Unmodified
<b>Isotype</b>	IgG
<b>Clonality</b>	Polyclonal
<b>Form</b>	Liquid
<b>Concentration</b>	1mg/ml
<b>Storage</b>	Aliquot and store at -20°C (valid for 12 months). Avoid freeze/thaw cycles.
<b>Shipping</b>	Ice bags
<b>Buffer</b>	Liquid in PBS containing 50% glycerol, 0.5% protective protein and 0.02% New type preservative N.
<b>Purification</b>	Affinity purification

**Application**

<b>Dilution Ratio</b>	WB 1:500-1:2000,IHC 1:50-1:300,ELISA 1:2000-1:20000
<b>Molecular Weight</b>	48kDa

**Antigen Information**

<b>Gene Name</b>	MAZ
<b>Alternative Names</b>	MAZ; ZNF801; Myc-associated zinc finger protein; MAZI; Pur-1; Purine-binding transcription factor; Transcription factor Zif87; ZF87; Zinc finger protein 801
<b>Gene ID</b>	4150.0
<b>SwissProt ID</b>	P56270
<b>Immunogen</b>	The antiserum was produced against synthesized peptide derived from human MAZ. AA range:159-208

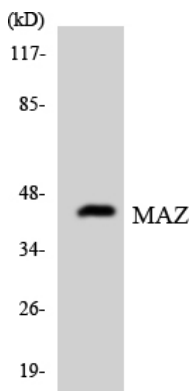
**Background**

function:May function as a transcription factor with dual roles in transcription initiation and termination. Binds to two sites, ME1a1 and ME1a2, within the c-myc promoter having greater affinity for the former. Also binds to multiple G/C-rich sites within the promoter of the Sp1 family of transcription factors.,similarity:Contains 6 C2H2-type zinc fingers.,subcellular location:In brains of Alzheimer disease patients, present in a plaque-like structures.,subunit:Interacts with BPTF.,tissue specificity:Present in kidney, liver and brain. In the brain, highest levels are found in motor cortex and midfrontal cortex (at protein level),function:May function as a transcription factor with dual roles in transcription initiation and termination. Binds to two sites, ME1a1 and ME1a2, within the c-myc promoter having greater affinity for the former. Also binds to multiple G/C-rich sites within the promoter of the Sp1 family of transcription factors.,similarity:Contains 6 C2H2-type zinc fingers.,subcellular location:In brains of Alzheimer disease patients, present in a plaque-like structures.,subunit:Interacts with BPTF.,tissue specificity:Present in kidney, liver and brain. In the brain, highest levels are found in motor cortex and midfrontal cortex (at protein level),

## Research Area

Epigenetics and Nuclear Signaling; Transcription; Domain Families; Zinc Finger

## Image Data



Western blot analysis of the lysates from HepG2 cells using MAZ antibody.