

## Summary

<b>Production Name</b>	Maspin Rabbit Polyclonal Antibody
<b>Description</b>	Rabbit Polyclonal Antibody
<b>Host</b>	Rabbit
<b>Application</b>	WB,IHC-P,IF-P,IF-F,ICC/IF,ELISA
<b>Reactivity</b>	Human,Mouse,Rat

## Performance

<b>Conjugation</b>	Unconjugated
<b>Modification</b>	Unmodified
<b>Isotype</b>	IgG
<b>Clonality</b>	Polyclonal
<b>Form</b>	Liquid
<b>Storage</b>	Store at 4°C short term. Aliquot and store at -20°C long term. Avoid freeze/thaw cycles.
<b>Buffer</b>	Liquid in PBS containing 50% glycerol, 0.5% protective protein and 0.02% New type preservative N.
<b>Purification</b>	Affinity purification

## Immunogen

<b>Gene Name</b>	SERPINB5
<b>Alternative Names</b>	SERPINB5; PI5; Serpin B5; Maspin; Peptidase inhibitor 5; PI-5
<b>Gene ID</b>	5268.0
<b>SwissProt ID</b>	P36952.The antiserum was produced against synthesized peptide derived from human Serpin B5. AA range:91-140

## Application

<b>Dilution Ratio</b>	WB 1:500-1:2000, IHC-P 1:100-1:300, IF-P/IF-F/ICC/IF 1:200-1:1000, ELISA 1:20000.Not yet tested in other applications.
<b>Molecular Weight</b>	40kDa

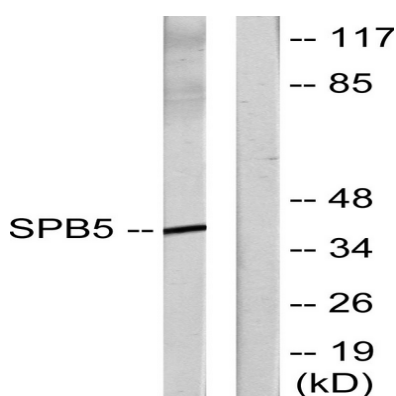
## Background

function: Tumor suppressor. It blocks the growth, invasion, and metastatic properties of mammary tumors. As it does not undergo the S (stressed) to R (relaxed) conformational transition characteristic of active serpins, it exhibits no serine protease inhibitory activity., similarity: Belongs to the serpin family. Ov-serpin subfamily., tissue specificity: Normal mammary epithelial cells., function: Tumor suppressor. It blocks the growth, invasion, and metastatic properties of mammary tumors. As it does not undergo the S (stressed) to R (relaxed) conformational transition characteristic of active serpins, it exhibits no serine protease inhibitory activity., similarity: Belongs to the serpin family. Ov-serpin subfamily., tissue specificity: Normal mammary epithelial cells.,

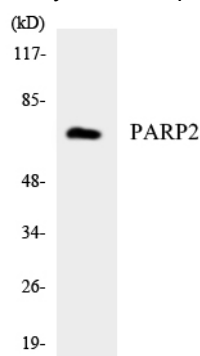
## Research Area

p53;

## Image Data



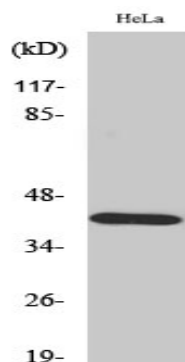
Western blot analysis of lysates from HeLa cells, using Serpin B5 Antibody. The lane on the right is blocked with the synthesized peptide.



Western blot analysis of the lysates from HeLa cells using PARP2 antibody.

**Product Name: Maspin Rabbit Polyclonal Antibody**  
**Catalog #: APRab13656**

---



Western Blot analysis of various cells using Maspin Polyclonal Antibody

### **Note**

For research use only.