
Product Name: MARK1/2/3/4 Rabbit Polyclonal Antibody**Catalog #: APRab13648**

For research use only.

Summary

Description	Rabbit polyclonal Antibody
Host	Rabbit
Application	WB,IHC,ICC/IF,ELISA
Reactivity	Human,Mouse,Rat,Monkey
Conjugation	Unconjugated
Modification	Unmodified
Isotype	IgG
Clonality	Polyclonal
Form	Liquid
Concentration	1mg/ml
Storage	Aliquot and store at -20°C (valid for 12 months). Avoid freeze/thaw cycles.
Shipping	Ice bags
Buffer	Liquid in PBS containing 50% glycerol, 0.5% protective protein and 0.02% New type preservative N.
Purification	Affinity purification

Application

Dilution Ratio	WB 1:500-1:2000,IHC 1:100-1:300,ICC/IF 1:200-1:1000,ELISA 1:5000-1:20000
Molecular Weight	89kDa

Antigen Information

Gene Name	MARK1/2/3/4
Alternative Names	MARK1; KIAA1477; MARK; Serine/threonine-protein kinase MARK1; MAP/microtubule affinity-regulating kinase 1; PAR1 homolog c; Par-1c; Par1c; MARK2; EMK1; Serine/threonine-protein kinase MARK2; ELKL motif kinase 1; EMK-1; MAP/microtubule affin
Gene ID	4139/2011/4140/57787
SwissProt ID	Q9P0L2/Q7KZI7/P27448/Q96L34
Immunogen	The antiserum was produced against synthesized peptide derived from human MARK1/2/3/4. AA range:181-230

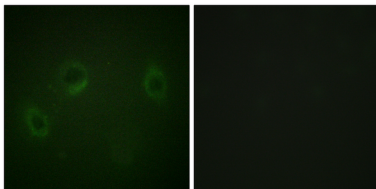
Background

catalytic activity:ATP + a protein = ADP + a phosphoprotein.,cofactor:Magnesium.,enzyme regulation:Activated by phosphorylation on Thr-215 by STK11 in complex with STE20-related adapter-alpha (STRAD alpha) pseudo kinase and CAB39.,function:May play a role in cytoskeletal stability.,similarity:Belongs to the protein kinase superfamily. CAMK Ser/Thr protein kinase family. MARK subfamily.,similarity:Contains 1 KA1 (kinase-associated) domain.,similarity:Contains 1 protein kinase domain.,similarity:Contains 1 UBA domain.,subcellular location:Appears to localize to an intracellular network.,tissue specificity:Highly expressed in heart, skeletal muscle, brain, fetal brain and fetal kidney.,catalytic activity:ATP + a protein = ADP + a phosphoprotein.,cofactor:Magnesium.,enzyme regulation:Activated by phosphorylation on Thr-215 by STK11 in complex with STE20-related adapter-alpha (STRAD alpha) pseudo kinase and CAB39.,function:May play a role in cytoskeletal stability.,similarity:Belongs to the protein kinase superfamily. CAMK Ser/Thr protein kinase family. MARK subfamily.,similarity:Contains 1 KA1 (kinase-associated) domain.,similarity:Contains 1 protein kinase domain.,similarity:Contains 1 UBA domain.,subcellular location:Appears to localize to an intracellular network.,tissue specificity:Highly expressed in heart, skeletal muscle, brain, fetal brain and fetal kidney.,

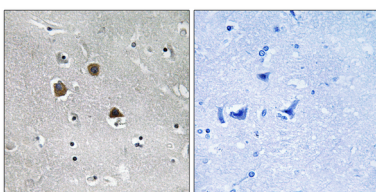
Research Area

Regulation of Microtubule Dynamics

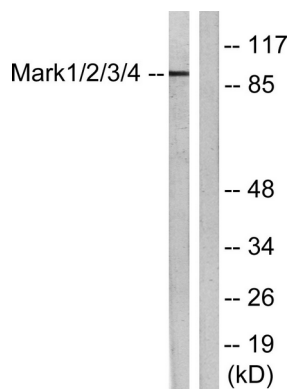
Image Data



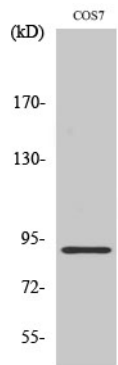
Immunofluorescence analysis of HeLa cells, using MARK1/2/3/4 Antibody. The picture on the right is blocked with the synthesized peptide.



Immunohistochemistry analysis of paraffin-embedded human brain tissue, using MARK1/2/3/4 Antibody. The picture on the right is blocked with the synthesized peptide.



Western blot analysis of lysates from COS7 cells, using MARK1/2/3/4 Antibody. The lane on the right is blocked with the synthesized peptide.



Western Blot analysis of various cells using MARK1/2/3/4 Polyclonal Antibody