

**Product Name: MAP-4 Rabbit Polyclonal Antibody****Catalog #: APRab13630**

For research use only.

**Summary**

<b>Description</b>	Rabbit polyclonal Antibody
<b>Host</b>	Rabbit
<b>Application</b>	IHC, ICC/IF, ELISA
<b>Reactivity</b>	Human, Mouse, Rat
<b>Conjugation</b>	Unconjugated
<b>Modification</b>	Unmodified
<b>Isotype</b>	IgG
<b>Clonality</b>	Polyclonal
<b>Form</b>	Liquid
<b>Concentration</b>	1mg/ml
<b>Storage</b>	Aliquot and store at -20°C (valid for 12 months). Avoid freeze/thaw cycles.
<b>Shipping</b>	Ice bags
<b>Buffer</b>	Liquid in PBS containing 50% glycerol, 0.5% protective protein and 0.02% New type preservative N.
<b>Purification</b>	Affinity purification

**Application**

<b>Dilution Ratio</b>	IHC 1:100-1:300, ICC/IF 1:200-1:1000, ELISA 1:5000-1:10000
<b>Molecular Weight</b>	121kDa

**Antigen Information**

<b>Gene Name</b>	MAP4
<b>Alternative Names</b>	MAP4; Microtubule-associated protein 4; MAP-4
<b>Gene ID</b>	4134.0
<b>SwissProt ID</b>	P27816
<b>Immunogen</b>	The antiserum was produced against synthesized peptide derived from human MAP4. AA range:662-711

**Background**

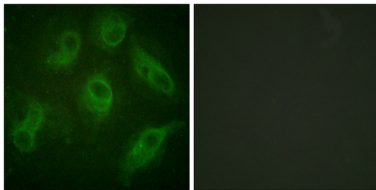
The protein encoded by this gene is a major non-neuronal microtubule-associated protein. This protein contains a domain

similar to the microtubule-binding domains of neuronal microtubule-associated protein (MAP2) and microtubule-associated protein tau (MAPT/TAU). This protein promotes microtubule assembly, and has been shown to counteract destabilization of interphase microtubule catastrophe promotion. Cyclin B was found to interact with this protein, which targets cell division cycle 2 (CDC2) kinase to microtubules. The phosphorylation of this protein affects microtubule properties and cell cycle progression. Multiple transcript variants encoding different isoforms have been found for this gene. [provided by RefSeq, Aug 2008],alternative products:Additional isoforms seem to exist,caution:The sequence shown here is derived from an Ensembl automatic analysis pipeline and should be considered as preliminary data.,function:Non-neuronal microtubule-associated protein. Promotes microtubule assembly.,PTM:Phosphorylated upon DNA damage, probably by ATM or ATR (By similarity). Phosphorylation on Ser-787 negatively regulates MAP4 activity to promote microtubule assembly. Isoform 3 is phosphorylated on Ser-337 and Ser-338.,similarity:Contains 3 Tau/MAP repeats.,similarity:Contains 4 Tau/MAP repeats.,

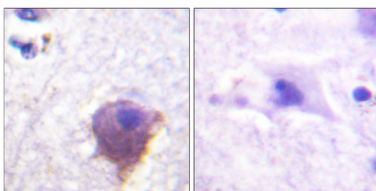
## Research Area

Signal Transduction; Cytoskeleton / ECM; Cytoskeleton; Microtubules; MT Associated Proteins; MAP; Cell Biology; Cell Cycle; Cyclins; Cyclin B Family

## Image Data



Immunofluorescence analysis of HeLa cells, using MAP4 Antibody. The picture on the right is blocked with the synthesized peptide.



Immunohistochemistry analysis of paraffin-embedded human brain tissue, using MAP4 Antibody. The picture on the right is blocked with the synthesized peptide.