
Product Name: MAP1B Rabbit Polyclonal Antibody**Catalog #: APRab13623**

For research use only.

Summary

Description	Rabbit polyclonal Antibody
Host	Rabbit
Application	IHC,ICC/IF
Reactivity	Human,Rat,Mouse
Conjugation	Unconjugated
Modification	Unmodified
Isotype	IgG
Clonality	Polyclonal
Form	Liquid
Concentration	1mg/ml
Storage	Aliquot and store at -20°C (valid for 12 months). Avoid freeze/thaw cycles.
Shipping	Ice bags
Buffer	Liquid in PBS containing 50% glycerol, and 0.02% New type preservative N.
Purification	Affinity purification

Application

Dilution Ratio	IHC 1:50-1:300,ICC/IF 1:50-1:200
Molecular Weight	271kDa

Antigen Information

Gene Name	MAP1B
Alternative Names	MAP1B
Gene ID	4131.0
SwissProt ID	P46821
Immunogen	Synthesized peptide derived from human protein . at AA range: 480-560

Background

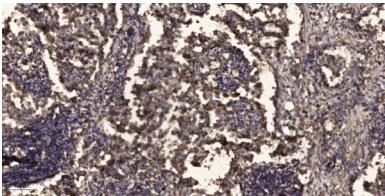
This gene encodes a protein that belongs to the microtubule-associated protein family. The proteins of this family are thought to be involved in microtubule assembly, which is an essential step in neurogenesis. The product of this gene is a precursor polypeptide that presumably undergoes proteolytic processing to generate the final MAP1B heavy chain and LC1 light chain.

Gene knockout studies of the mouse microtubule-associated protein 1B gene suggested an important role in development and function of the nervous system. [provided by RefSeq, Jul 2008],domain:Has a highly basic region with many copies of the sequence KKEE and KKEI/V, repeated but not at fixed intervals, which is responsible for the binding of MAP1B to microtubules.,function:The function of brain MAPS is essentially unknown. Phosphorylated MAP1B may play a role in the cytoskeletal changes that accompany neurite extension. Possibly MAP1B Binds to at least two tubulin subunits in the polymer, and this bridging of subunits might be involved in nucleating microtubule polymerization and in stabilizing microtubules.,PTM:LC1 is generated from MAP1B by proteolytic processing.,PTM:Phosphorylated upon DNA damage, probably by ATM or ATR.,similarity:Belongs to the MAP1 family.,subunit:3 different light chains, LC1, LC2 and LC3, can associate with MAP1A and MAP1B proteins. LC1 interacts with the amino-terminal region of MAP1B. Interacts with ANP32A and TIAM2 (By similarity). Interacts (via C-terminus) with GAN (via Kelch domains),

Research Area

Neurology process; Neurogenesis; Neuroscience; Cell Type Marker; Neuron marker; Axon marker; Neuroscience Markers; Neuronal; Cell Adhesion Proteins; Cytoskeletal Proteins; Microtubules; Signal Transduction; Cytoskeleton / ECM; Cytoskeleton; Microtubules; MT Associated Proteins; MAP; Tags & Cell Markers

Image Data



Immunohistochemical analysis of paraffin-embedded human Squamous cell carcinoma of lung. 1, Antibody was diluted at 1:200 (4° overnight) . 2, Tris-EDTA,pH9.0 was used for antigen retrieval. 3,Secondary antibody was diluted at 1:200 (room temperature, 45min) .