

---

**Product Name: Mammaglobin B Rabbit Polyclonal Antibody****Catalog #: APRab13615**

For research use only.

**Summary**

<b>Description</b>	Rabbit polyclonal Antibody
<b>Host</b>	Rabbit
<b>Application</b>	WB,IHC,ICC/IF,ELISA
<b>Reactivity</b>	Human,Rat,Mouse
<b>Conjugation</b>	Unconjugated
<b>Modification</b>	Unmodified
<b>Isotype</b>	IgG
<b>Clonality</b>	Polyclonal
<b>Form</b>	Liquid
<b>Concentration</b>	1mg/ml
<b>Storage</b>	Aliquot and store at -20°C (valid for 12 months). Avoid freeze/thaw cycles.
<b>Shipping</b>	Ice bags
<b>Buffer</b>	Liquid in PBS containing 50% glycerol, 0.5% protective protein and 0.02% New type preservative N.
<b>Purification</b>	Affinity purification

**Application**

<b>Dilution Ratio</b>	WB 1:500-1:2000,IHC 1:100-1:300,ICC/IF 1:200-1:1000,ELISA 1:10000-1:20000
<b>Molecular Weight</b>	15kDa

**Antigen Information**

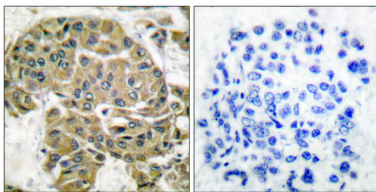
<b>Gene Name</b>	SCGB2A1
<b>Alternative Names</b>	SCGB2A1; LIPHC; MGB2; UGB3; Mammaglobin-B; Lacryglobin; Lipophilin-C; Mammaglobin-2; Secretoglobin family 2A member 1
<b>Gene ID</b>	4246.0
<b>SwissProt ID</b>	O75556
<b>Immunogen</b>	The antiserum was produced against synthesized peptide derived from human Mammaglobin B. AA range:10-59

**Background**

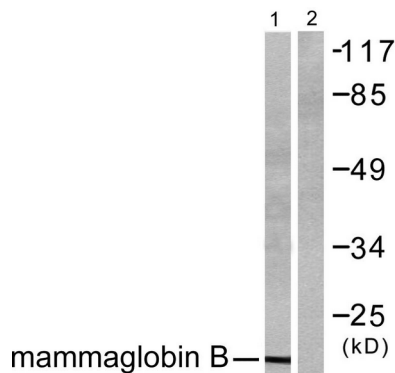
function:May bind androgens and other steroids, may also bind estramustine, a chemotherapeutic agent used for prostate cancer. May be under transcriptional regulation of steroid hormones.,mass spectrometry: PubMed:9720917,similarity:Belongs to the secretoglobin family. Lipophilin subfamily.,subunit:Heterodimer of a lipophilin A and a lipophilin C (mammaglobin B) monomer associated head to head.,tissue specificity:Expressed in thymus, trachea, kidney, steroid responsive tissues (prostate, testis, uterus, breast and ovary) and salivary gland.,function:May bind androgens and other steroids, may also bind estramustine, a chemotherapeutic agent used for prostate cancer. May be under transcriptional regulation of steroid hormones.,mass spectrometry: PubMed:9720917,similarity:Belongs to the secretoglobin family. Lipophilin subfamily.,subunit:Heterodimer of a lipophilin A and a lipophilin C (mammaglobin B) monomer associated head to head.,tissue specificity:Expressed in thymus, trachea, kidney, steroid responsive tissues (prostate, testis, uterus, breast and ovary) and salivary gland.,

## Research Area

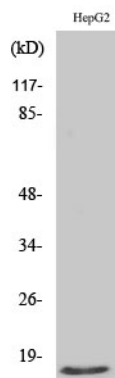
## Image Data



Immunohistochemistry analysis of paraffin-embedded human breast carcinoma tissue, using Mammaglobin B Antibody. The picture on the right is blocked with the synthesized peptide.



Western blot analysis of lysates from HepG2 cells, using Mammaglobin B Antibody. The lane on the right is blocked with the synthesized peptide.



Western Blot analysis of various cells using Mammaglobin B Polyclonal Antibody

