
Product Name: MAGH1 Rabbit Polyclonal Antibody**Catalog #: APRab13598**

For research use only.

Summary

Description	Rabbit polyclonal Antibody
Host	Rabbit
Application	WB,ELISA
Reactivity	Human,Mouse,Rat
Conjugation	Unconjugated
Modification	Unmodified
Isotype	IgG
Clonality	Polyclonal
Form	Liquid
Concentration	1mg/ml
Storage	Aliquot and store at -20°C (valid for 12 months). Avoid freeze/thaw cycles.
Shipping	Ice bags
Buffer	Liquid in PBS containing 50% glycerol, and 0.02% New type preservative N.
Purification	Affinity purification

Application

Dilution Ratio	WB 1:500-1:2000,ELISA 1:5000-1:20000
Molecular Weight	24kDa

Antigen Information

Gene Name	MAGEH1 APR1
Alternative Names	
Gene ID	28986.0
SwissProt ID	Q9H213
Immunogen	Synthesized peptide derived from human protein . at AA range: 10-90

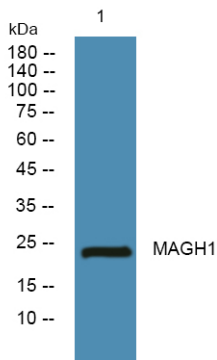
Background

This gene belongs to the non-CT (non cancer/testis) subgroup of the melanoma-associated antigen (MAGE) superfamily. The encoded protein is likely associated with apoptosis, cell cycle arrest, growth inhibition or cell differentiation. The protein may be involved in the atRA (all-trans retinoic acid) signaling through the STAT1-alpha (signal transducer and activator of transcription

1-alpha) pathway. [provided by RefSeq, Aug 2013],similarity:Contains 1 MAGE domain.,

Research Area

Image Data



Western blot analysis of lysates from SW480 cells, MAGH1 Rabbit Polyclonal Antibody was diluted at 1:1000, 4°over night