
Product Name: MAGE-9 Rabbit Polyclonal Antibody**Catalog #: APRab13592**

For research use only.

Summary

Description	Rabbit polyclonal Antibody
Host	Rabbit
Application	IHC,ICC/IF,ELISA
Reactivity	Human,Rat,Mouse
Conjugation	Unconjugated
Modification	Unmodified
Isotype	IgG
Clonality	Polyclonal
Form	Liquid
Concentration	1mg/ml
Storage	Aliquot and store at -20°C (valid for 12 months). Avoid freeze/thaw cycles.
Shipping	Ice bags
Buffer	Liquid in PBS containing 50% glycerol, 0.5% protective protein and 0.02% New type preservative N.
Purification	Affinity purification

Application

Dilution Ratio IHC 1:100-1:300,ICC/IF 1:50-1:200,ELISA 1:20000-1:40000

Molecular Weight

Antigen Information

Gene Name	MAGEA9
Alternative Names	MAGEA9; MAGE9; MAGEA9A; MAGEA9B; Melanoma-associated antigen 9; Cancer/testis antigen 1.9; CT1.9; MAGE-9 antigen
Gene ID	4108/728269
SwissProt ID	P43362
Immunogen	Synthesized peptide derived from MAGE-9 . at AA range: 1-80

Background

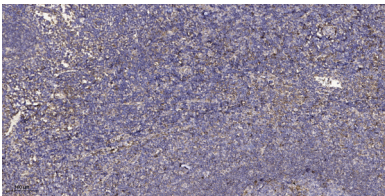
This gene is a member of the MAGEA gene family. The members of this family encode proteins with 50 to 80% sequence

identity to each other. The promoters and first exons of the MAGEA genes show considerable variability, suggesting that the existence of this gene family enables the same function to be expressed under different transcriptional controls. The MAGEA genes are clustered at chromosomal location Xq28. They have been implicated in some hereditary disorders, such as dyskeratosis congenita. [provided by RefSeq, Jul 2008],function:Not known, though may play a role in embryonal development and tumor transformation or aspects of tumor progression.,similarity:Contains 1 MAGE domain.,tissue specificity:Expressed in many tumors of several types, such as melanoma, head and neck squamous cell carcinoma, lung carcinoma and breast carcinoma, but not in normal tissues except for testes and placenta.,

Research Area

Cancer; Tumor immunology; Tumor-associated antigens

Image Data



Immunohistochemical analysis of paraffin-embedded human tonsil. 1, Antibody was diluted at 1:200 (4° overnight) . 2, Tris-EDTA,pH9.0 was used for antigen retrieval. 3,Secondary antibody was diluted at 1:200 (room temperature, 30min) .