
Product Name: MAGC3 Rabbit Polyclonal Antibody**Catalog #: APRab13584**

For research use only.

Summary

Description	Rabbit polyclonal Antibody
Host	Rabbit
Application	WB,ELISA
Reactivity	Human,Rat,Mouse
Conjugation	Unconjugated
Modification	Unmodified
Isotype	IgG
Clonality	Polyclonal
Form	Liquid
Concentration	1mg/ml
Storage	Aliquot and store at -20°C (valid for 12 months). Avoid freeze/thaw cycles.
Shipping	Ice bags
Buffer	Liquid in PBS containing 50% glycerol, and 0.02% New type preservative N.
Purification	Affinity purification

Application

Dilution Ratio	WB 1:500-1:2000,ELISA 1:5000-1:20000
Molecular Weight	70kDa

Antigen Information

Gene Name	MAGEC3 HCA2
Alternative Names	
Gene ID	139081.0
SwissProt ID	Q8TD91
Immunogen	Synthesized peptide derived from human protein . at AA range: 60-140

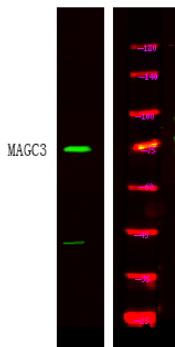
Background

This gene is a member of the MAGEC gene family. The members of this family are not expressed in normal tissues, except for testis, and are expressed in tumors of various histological types. The MAGEC genes are clustered on chromosome Xq26-q27. Two transcript variants encoding distinct isoforms have been found for this gene. [provided by RefSeq, Jul

2008],similarity:Contains 2 MAGE domains.,tissue specificity:Expressed in testis. Not expressed in other normal tissues, but is expressed in tumors of different histological origins.,

Research Area

Image Data



Western Blot analysis of HEK293 lysis, using primary antibody at 1:1000 dilution. Secondary antibody was diluted at 1:10000