

Product Name: MACC1 Rabbit Polyclonal Antibody**Catalog #: APRab13542**

For research use only.

Summary

Description	Rabbit polyclonal Antibody
Host	Rabbit
Application	WB,ELISA
Reactivity	Human,Mouse
Conjugation	Unconjugated
Modification	Unmodified
Isotype	IgG
Clonality	Polyclonal
Form	Liquid
Concentration	1mg/ml
Storage	Aliquot and store at -20°C (valid for 12 months). Avoid freeze/thaw cycles.
Shipping	Ice bags
Buffer	Liquid in PBS containing 50% glycerol, 0.5% protective protein and 0.02% New type preservative N.
Purification	Affinity purification

Application

Dilution Ratio	WB 1:500-1:2000,ELISA 1:10000-1:20000
Molecular Weight	97kDa

Antigen Information

Gene Name	MACC1
Alternative Names	MACC1; Metastasis-associated in colon cancer protein 1; SH3 domain-containing protein 7a5
Gene ID	346389.0
SwissProt ID	Q6ZN28
Immunogen	The antiserum was produced against synthesized peptide derived from the Internal region of human MACC1. AA range:411-460

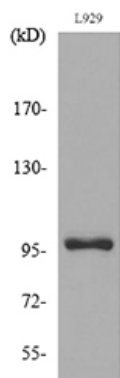
Background

MACC1 is a key regulator of the hepatocyte growth factor (HGF; MIM 142409)-HGF receptor (HGFR, or MET; MIM 164860) pathway, which is involved in cellular growth, epithelial-mesenchymal transition, angiogenesis, cell motility, invasiveness, and metastasis. Expression of MACC1 in colon cancer (MIM 114500) specimens is an independent prognostic indicator for metastasis formation and metastasis-free survival (Stein et al., 2009 [PubMed 19098908]).[supplied by OMIM, Mar 2009],function:Acts as a transcription activator for MET and as a key regulator of HGF-MET signaling. Promotes cell motility, proliferation and hepatocyte growth factor (HGF)-dependent scattering in vitro and tumor growth and metastasis in vivo.,similarity:Contains 1 SH3 domain.,subcellular location:Mainly found in the cytoplasm in non-metastasizing tumors.,tissue specificity:Preferentially expressed in metastasizing tumors.,

Research Area

Growth factors; Hormones; Cancer; Tumor biomarkers; Epigenetics and Nuclear Signaling; Transcription; Other factors; Signal Transduction; Growth Factors/Hormones

Image Data



Western blot analysis of lysate from L929 cells, using MACC1 Antibody.



Western Blot analysis of L929 cells using MACC1 Polyclonal Antibody.. Secondary antibody was diluted at 1:20000