

Product Name: LYPLA1 Rabbit Polyclonal Antibody**Catalog #: APRab13515**

For research use only.

Summary

Description	Rabbit polyclonal Antibody
Host	Rabbit
Application	WB,IHC,ICC/IF,ELISA
Reactivity	Human,Mouse,Rat
Conjugation	Unconjugated
Modification	Unmodified
Isotype	IgG
Clonality	Polyclonal
Form	Liquid
Concentration	1mg/ml
Storage	Aliquot and store at -20°C (valid for 12 months). Avoid freeze/thaw cycles.
Shipping	Ice bags
Buffer	Liquid in PBS containing 50% glycerol, 0.5% protective protein and 0.02% New type preservative N.
Purification	Affinity purification

Application

Dilution Ratio	WB 1:500-1:2000,IHC 1:100-1:300,ICC/IF 1:200-1:1000,ELISA 1:20000-1:40000
Molecular Weight	25kDa

Antigen Information

Gene Name	LYPLA1
Alternative Names	LYPLA1; APT1; LPL1; Acyl-protein thioesterase 1; APT-1; hAPT1; Lysophospholipase 1; Lysophospholipase I; LPL-I; LysoPLA I
Gene ID	10434.0
SwissProt ID	O75608
Immunogen	The antiserum was produced against synthesized peptide derived from human LYPLA1. AA range:51-100

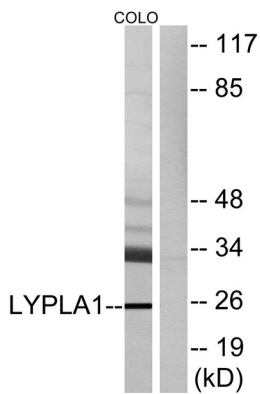
Background

This gene encodes a member of the alpha/beta hydrolase superfamily. The encoded protein functions as a homodimer, exhibiting both depalmitoylating as well as lysophospholipase activity, and may be involved in Ras localization and signaling. Alternate splicing results in multiple transcript variants. Pseudogenes of this gene have been defined on chromosomes 4, 6, and 7. [provided by RefSeq, Jul 2013],catalytic activity:Palmitoyl-protein + H(2)O = palmitate + protein.,function:Hydrolyzes fatty acids from S-acylated cysteine residues in proteins such as trimeric G alpha proteins or HRAS. Also has low lysophospholipase activity.,similarity:Belongs to the AB hydrolase 2 family.,subunit:Homodimer.,

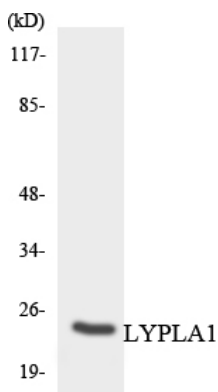
Research Area

Glycerophospholipid metabolism;

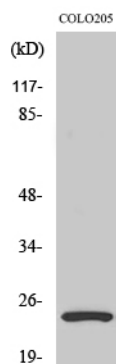
Image Data



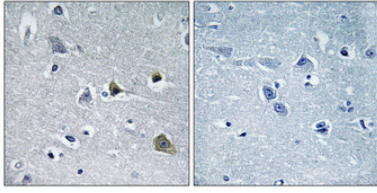
Western blot analysis of lysates from COLO cells, using LYPLA1 Antibody. The lane on the right is blocked with the synthesized peptide.



Western blot analysis of the lysates from HeLa cells using LYPLA1 antibody.



Western Blot analysis of various cells using LYPLA1 Polyclonal Antibody diluted at 1 : 2000



Immunohistochemical analysis of paraffin-embedded Human brain. Antibody was diluted at 1:100 (4°, overnight) . High-pressure and temperature Tris-EDTA, pH8.0 was used for antigen retrieval. Negative control (right) obtained from antibody was pre-absorbed by immunogen peptide.