

Product Name: Lyn Rabbit Polyclonal Antibody**Catalog #: APRab13511**

For research use only.

Summary

Description	Rabbit polyclonal Antibody
Host	Rabbit
Application	WB,IHC,ICC/IF,ELISA
Reactivity	Human,Mouse,Rat
Conjugation	Unconjugated
Modification	Unmodified
Isotype	IgG
Clonality	Polyclonal
Form	Liquid
Concentration	1mg/ml
Storage	Aliquot and store at -20°C (valid for 12 months). Avoid freeze/thaw cycles.
Shipping	Ice bags
Buffer	Liquid in PBS containing 50% glycerol, 0.5% protective protein and 0.02% New type preservative N.
Purification	Affinity purification

Application

Dilution Ratio	WB 1:500-1:2000,IHC 1:100-1:300,ICC/IF 1:50-1:200,ELISA 1:5000-1:10000
Molecular Weight	53,56kDa

Antigen Information

Gene Name	LYN
Alternative Names	LYN; JTK8; Tyrosine-protein kinase Lyn; Lck/Yes-related novel protein tyrosine kinase; V-yes-1 Yamaguchi sarcoma viral related oncogene homolog; p53Lyn; p56Lyn
Gene ID	4067.0
SwissProt ID	P07948
Immunogen	The antiserum was produced against synthesized peptide derived from human Lyn. AA range:463-512

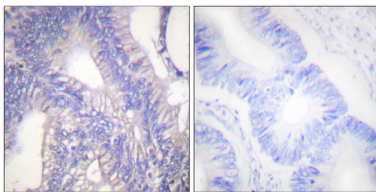
Background

This gene encodes a tyrosine protein kinase, which may be involved in the regulation of mast cell degranulation, and erythroid differentiation. Alternatively spliced transcript variants encoding different isoforms have been found for this gene. [provided by RefSeq, Jul 2011], catalytic activity: ATP + a [protein]-L-tyrosine = ADP + a [protein]-L-tyrosine phosphate., similarity: Belongs to the protein kinase superfamily. Tyr protein kinase family., similarity: Belongs to the protein kinase superfamily. Tyr protein kinase family. SRC subfamily., similarity: Contains 1 protein kinase domain., similarity: Contains 1 SH2 domain., similarity: Contains 1 SH3 domain., subunit: Interacts with phosphorylated LIME1 and with CD79A upon BCR activation. Interacts with Epstein-Barr virus LMP2A. Interacts with TGFB111. Interaction, via the SH2 and SH3, domains with MUC1 is stimulated by IL7 and, the subsequent phosphorylation increases the binding between MUC1 and CTNNB1/beta-catenin. Interacts with PPP1R15A via the SH3 domain., tissue specificity: Expressed in primary neuroblastoma tumors.,

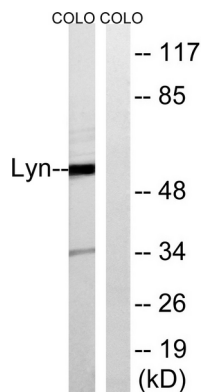
Research Area

Chemokine; B_Cell_Antigen; Fc epsilon RI; Fc gamma R-mediated phagocytosis; Long-term depression; Epithelial cell signaling in Helicobacter pylori infection;

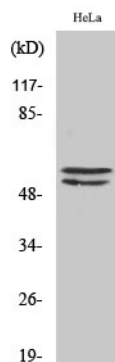
Image Data



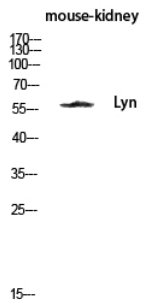
Immunohistochemistry analysis of paraffin-embedded human colon carcinoma tissue, using Lyn Antibody. The picture on the right is blocked with the synthesized peptide.



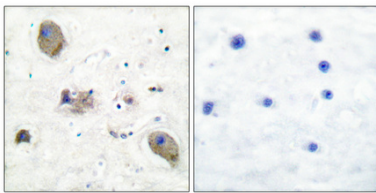
Western blot analysis of lysates from COLO cells, treated with H₂O₂ 100uM 30', using Lyn Antibody. The lane on the right is blocked with the synthesized peptide.



Western Blot analysis of various cells using Lyn Polyclonal Antibody diluted at 1 : 500



Western blot analysis of mouse-kidney lysis using Lyn antibody. Antibody was diluted at 1:500



Immunohistochemical analysis of paraffin-embedded Human breast cancer. Antibody was diluted at 1:100 (4°,overnight) . High-pressure and temperature Tris-EDTA,pH8.0 was used for antigen retrieval. Negative contrl (right) obtained from antibody was pre-absorbed by immunogen peptide.