

Product Name: Lymphotactin Rabbit Polyclonal Antibody**Catalog #: APRab13508**

For research use only.

Summary

| | |
|----------------------|---|
| Description | Rabbit polyclonal Antibody |
| Host | Rabbit |
| Application | WB,IHC,ICC/IF,ELISA |
| Reactivity | Human,Rat,Mouse |
| Conjugation | Unconjugated |
| Modification | Unmodified |
| Isotype | IgG |
| Clonality | Polyclonal |
| Form | Liquid |
| Concentration | 1mg/ml |
| Storage | Aliquot and store at -20°C (valid for 12 months). Avoid freeze/thaw cycles. |
| Shipping | Ice bags |
| Buffer | Liquid in PBS containing 50% glycerol, 0.5% protective protein and 0.02% New type preservative N. |
| Purification | Affinity purification |

Application

| | |
|-------------------------|---|
| Dilution Ratio | WB 1:500-1:2000,IHC 1:100-1:300,ICC/IF 1:50-1:200,ELISA 1:10000-1:20000 |
| Molecular Weight | 25kDa |

Antigen Information

| | |
|--------------------------|---|
| Gene Name | XCL1/XCL2 |
| Alternative Names | XCL1; LTN; SCYC1; Lymphotactin; ATAC; C motif chemokine 1; Cytokine SCM-1; Lymphotaxin; SCM-1-alpha; Small-inducible cytokine C1; XC chemokine ligand 1; XCL2; SCYC2; Cytokine SCM-1 beta; C motif chemokine 2; XC chemokine ligand 2 |
| Gene ID | 6375.0 |
| SwissProt ID | P47992 |
| Immunogen | The antiserum was produced against synthesized peptide derived from the Internal region of human XCL1/XCL2. AA range:51-100 |

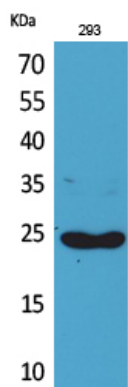
Background

This antimicrobial gene encodes a member of the chemokine superfamily. Chemokines function in inflammatory and immunological responses, inducing leukocyte migration and activation. The encoded protein is a member of the C-chemokine subfamily, retaining only two of four cysteines conserved in other chemokines, and is thought to be specifically chemotactic for T cells. This gene and a closely related family member are located on the long arm of chromosome 1. [provided by RefSeq, Sep 2014],function:Chemotactic activity for lymphocytes but not for monocytes or neutrophils.,online information:XCL1 entry,similarity:Belongs to the intercrine gamma family.,tissue specificity:Highest level in spleen, lower in peripheral leukocytes and very low levels in lung, colon and small intestine.,

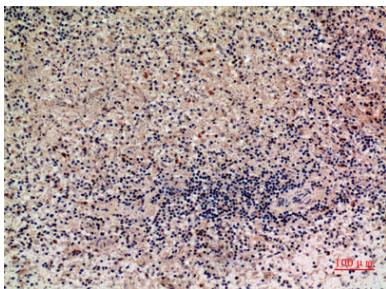
Research Area

Cytokine-cytokine receptor interaction;Chemokine;

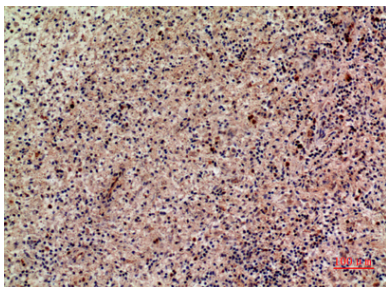
Image Data



Western Blot analysis of 293 cells using Lymphotactin Polyclonal Antibody..
Secondary antibody was diluted at 1:20000



Immunohistochemical analysis of paraffin-embedded human-liver, antibody was diluted at 1:100



Immunohistochemical analysis of paraffin-embedded human-liver, antibody was diluted at 1:100