
Product Name: LUC7L2 Rabbit Polyclonal Antibody**Catalog #: APRab13485**

For research use only.

Summary

Description	Rabbit polyclonal Antibody
Host	Rabbit
Application	WB,IHC,ICC/IF,ELISA
Reactivity	Human,Mouse,Rat
Conjugation	Unconjugated
Modification	Unmodified
Isotype	IgG
Clonality	Polyclonal
Form	Liquid
Concentration	1mg/ml
Storage	Aliquot and store at -20°C (valid for 12 months). Avoid freeze/thaw cycles.
Shipping	Ice bags
Buffer	Liquid in PBS containing 50% glycerol, 0.5% protective protein and 0.02% New type preservative N.
Purification	Affinity purification

Application

Dilution Ratio	WB 1:500-1:2000,IHC 1:100-1:300,ICC/IF 1:50-1:200,ELISA 1:20000-1:40000
Molecular Weight	47kDa

Antigen Information

Gene Name	LUC7L2
Alternative Names	LUC7L2; CGI-59; CGI-74; Putative RNA-binding protein Luc7-like 2
Gene ID	51631.0
SwissProt ID	Q9Y383
Immunogen	The antiserum was produced against synthesized peptide derived from human LUC7L2. AA range:129-178

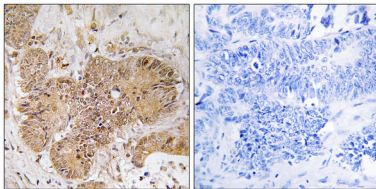
Background

This gene encodes a protein that contains a C2H2-type zinc finger, coiled-coil region and arginine, serine-rich (RS) domain. A

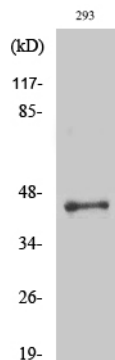
similar protein in mouse interacts with sodium channel modifier 1, and the encoded protein may be involved in the recognition of non-consensus splice donor sites in association with the U1 snRNP spliceosomal subunit. Alternatively spliced transcript variants encoding multiple isoforms have been observed for this gene. [provided by RefSeq, Sep 2011],function:May bind to RNA via its Arg/Ser-rich domain.,PTM:Phosphorylated upon DNA damage, probably by ATM or ATR.,similarity:Belongs to the Luc7 family.,similarity:Contains 1 C2H2-type zinc finger.,

Research Area

Image Data



Immunohistochemistry analysis of paraffin-embedded human colon carcinoma tissue, using LUC7L2 Antibody. The picture on the right is blocked with the synthesized peptide.



Western Blot analysis of various cells using LUC7L2 Polyclonal Antibody