
Product Name: LT- β Rabbit Polyclonal Antibody**Catalog #: APRab13481**

For research use only.

Summary

Description	Rabbit polyclonal Antibody
Host	Rabbit
Application	WB,ICC/IF,ELISA
Reactivity	Human,Mouse
Conjugation	Unconjugated
Modification	Unmodified
Isotype	IgG
Clonality	Polyclonal
Form	Liquid
Concentration	1mg/ml
Storage	Aliquot and store at -20°C (valid for 12 months). Avoid freeze/thaw cycles.
Shipping	Ice bags
Buffer	Liquid in PBS containing 50% glycerol, 0.5% protective protein and 0.02% New type preservative N.
Purification	Affinity purification

Application

Dilution Ratio	WB 1:500-1:2000,ICC/IF 1:200-1:1000,ELISA 1:5000-1:20000
Molecular Weight	22kDa

Antigen Information

Gene Name	LTB
Alternative Names	LTB; TNFC; TNFSF3; Lymphotoxin-beta; LT-beta; Tumor necrosis factor C; TNF-C; Tumor necrosis factor ligand superfamily member 3
Gene ID	4050.0
SwissProt ID	Q06643
Immunogen	The antiserum was produced against synthesized peptide derived from human TNFC. AA range:181-230

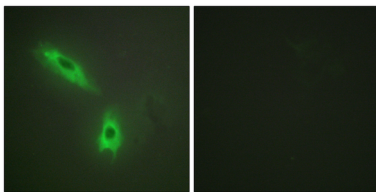
Background

Lymphotoxin beta is a type II membrane protein of the TNF family. It anchors lymphotoxin-alpha to the cell surface through heterotrimer formation. The predominant form on the lymphocyte surface is the lymphotoxin-alpha 1/beta 2 complex (e.g. 1 molecule alpha/2 molecules beta) and this complex is the primary ligand for the lymphotoxin-beta receptor. The minor complex is lymphotoxin-alpha 2/beta 1. LTB is an inducer of the inflammatory response system and involved in normal development of lymphoid tissue. Lymphotoxin-beta isoform b is unable to complex with lymphotoxin-alpha suggesting a function for lymphotoxin-beta which is independent of lymphotoxin-alpha. Alternative splicing results in multiple transcript variants encoding different isoforms. [provided by RefSeq, Jul 2008],function:Cytokine that binds to LTBR/TNFRSF3. May play a specific role in immune response regulation. Provides the membrane anchor for the attachment of the heterotrimeric complex to the cell surface. Isoform 2 is probably non-functional.,similarity:Belongs to the tumor necrosis factor family.,subunit:Heterotrimer of either two LTB and one LTA subunits or (less prevalent) one LTB and two LTA subunits.,tissue specificity:Spleen and thymus.,

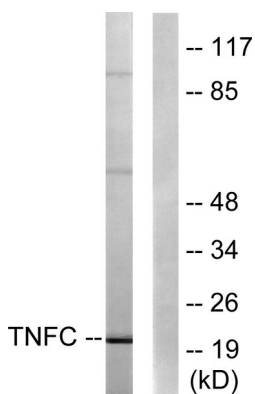
Research Area

Cytokine-cytokine receptor interaction;

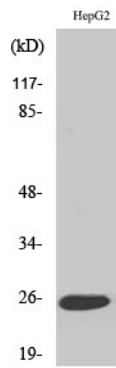
Image Data



Immunofluorescence analysis of HeLa cells, using TNFC Antibody. The picture on the right is blocked with the synthesized peptide.



Western blot analysis of lysates from HepG2 cells, using TNFC Antibody. The lane on the right is blocked with the synthesized peptide.



Western Blot analysis of various cells using LT- β Polyclonal Antibody