

Product Name: LSHR Rabbit Polyclonal Antibody**Catalog #: APRab13459**

For research use only.

Summary

Description	Rabbit polyclonal Antibody
Host	Rabbit
Application	WB,ELISA
Reactivity	Human,Mouse,Rat
Conjugation	Unconjugated
Modification	Unmodified
Isotype	IgG
Clonality	Polyclonal
Form	Liquid
Concentration	1mg/ml
Storage	Aliquot and store at -20°C (valid for 12 months). Avoid freeze/thaw cycles.
Shipping	Ice bags
Buffer	Liquid in PBS containing 50% glycerol, 0.5% protective protein and 0.02% New type preservative N.
Purification	Affinity purification

Application

Dilution Ratio	WB 1:500-1:2000,ELISA 1:10000-1:20000
Molecular Weight	80kDa

Antigen Information

Gene Name	LHCGR LCGR LGR2 LHRHR
Alternative Names	Lutropin-choriogonadotropic hormone receptor (LH/CG-R) (Luteinizing hormone receptor) (LHR) (LSH-R)
Gene ID	3973.0
SwissProt ID	P22888
Immunogen	Synthesized peptide derived from human LSHR Polyclonal

Background

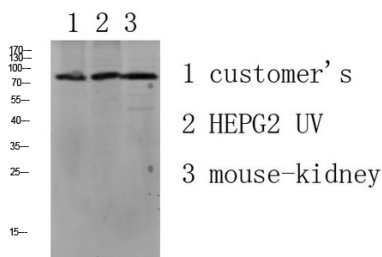
This gene encodes the receptor for both luteinizing hormone and choriogonadotropin. This receptor belongs to the G-protein

coupled receptor 1 family, and its activity is mediated by G proteins which activate adenylate cyclase. Mutations in this gene result in disorders of male secondary sexual character development, including familial male precocious puberty, also known as testotoxicosis, hypogonadotropic hypogonadism, Leydig cell adenoma with precocious puberty, and male pseudohermaphroditism with Leydig cell hypoplasia. [provided by RefSeq, Jul 2008],alternative products:Additional isoforms seem to exist,disease:Defects in LHCGR are a cause of familial male precocious puberty (FMPP) [MIM:176410]; also known as testotoxicosis. In FMPP the receptor is constitutively activated.,disease:Defects in LHCGR are a cause of Leydig cell hypoplasia (LCH) [MIM:152790]. LCH is an autosomal recessive disease characterized by male pseudohermaphroditism. In LCH the testes are small with marked immaturity of the Leydig cells which correlates with undetectable plasma testosterone levels and elevated gonadotropins.,function:Receptor for lutropin-choriogonadotropic hormone. The activity of this receptor is mediated by G proteins which activate adenylate cyclase.,online information:Glycoprotein-hormone Receptors Information System,similarity:Belongs to the G-protein coupled receptor 1 family.,similarity:Belongs to the G-protein coupled receptor 1 family. FSH/LSH/TSH subfamily.,similarity:Contains 7 LRR (leucine-rich) repeats.,tissue specificity:Gonadal and thyroid cells.,

Research Area

Calcium;Neuroactive ligand-receptor interaction;

Image Data



Western blot analysis of various lysate, antibody was diluted at 1000. Secondary antibody was diluted at 1:20000