

**Product Name: L-Selectin Rabbit Polyclonal Antibody****Catalog #: APRab13457**

For research use only.

**Summary**

<b>Description</b>	Rabbit polyclonal Antibody
<b>Host</b>	Rabbit
<b>Application</b>	WB,IHC,ELISA
<b>Reactivity</b>	Human,Mouse,Rat
<b>Conjugation</b>	Unconjugated
<b>Modification</b>	Unmodified
<b>Isotype</b>	IgG
<b>Clonality</b>	Polyclonal
<b>Form</b>	Liquid
<b>Concentration</b>	1mg/ml
<b>Storage</b>	Aliquot and store at -20°C (valid for 12 months). Avoid freeze/thaw cycles.
<b>Shipping</b>	Ice bags
<b>Buffer</b>	Liquid in PBS containing 50% glycerol, 0.5% protective protein and 0.02% New type preservative N.
<b>Purification</b>	Affinity purification

**Application**

<b>Dilution Ratio</b>	WB 1:500-1:2000,IHC 1:50-1:300,ELISA 1:2000-1:20000
<b>Molecular Weight</b>	42kDa

**Antigen Information**

<b>Gene Name</b>	SELL
<b>Alternative Names</b>	SELL; LNHR; LYAM1; L-selectin; CD62 antigen-like family member L; Leukocyte adhesion molecule 1; LAM-1; Leukocyte surface antigen Leu-8; Leukocyte-endothelial cell adhesion molecule 1; LECAM1; Lymph node homing receptor; TQ1; gp90-MEL; CD62L
<b>Gene ID</b>	6402.0
<b>SwissProt ID</b>	P14151
<b>Immunogen</b>	The antiserum was produced against synthesized peptide derived from the Internal region of human SELL. AA range:91-140

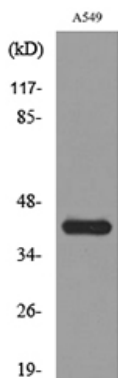
## Background

This gene encodes a cell surface adhesion molecule that belongs to a family of adhesion/homing receptors. The encoded protein contains a C-type lectin-like domain, a calcium-binding epidermal growth factor-like domain, and two short complement-like repeats. The gene product is required for binding and subsequent rolling of leucocytes on endothelial cells, facilitating their migration into secondary lymphoid organs and inflammation sites. Single-nucleotide polymorphisms in this gene have been associated with various diseases including immunoglobulin A nephropathy. Alternatively spliced transcript variants have been found for this gene. [provided by RefSeq, Oct 2009],function:Cell surface adhesion protein. Mediates the adherence of lymphocytes to endothelial cells of high endothelial venules in peripheral lymph nodes. Promotes initial tethering and rolling of leukocytes in endothelia.,online information:L-selectin,similarity:Belongs to the selectin/LECAM family.,similarity:Contains 1 C-type lectin domain.,similarity:Contains 1 EGF-like domain.,similarity:Contains 2 Sushi (CCP/SCR) domains.,subunit:Interaction with PSGL1/SELPLG is required for promoting recruitment and rolling of leukocytes. This interaction is dependent on the sialyl Lewis X glycan and tyrosine sulfation modifications of PSGL1. Sulfation on Y-51 of PSGL1 is important for L-selectin binding.,tissue specificity:Expressed in B cell lines and T lymphocytes.,

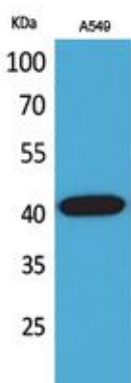
## Research Area

Cell adhesion molecules (CAMs);

## Image Data



Western blot analysis of lysate from A549 cells, using SELL Antibody.



Western Blot analysis of A549 cells using L-Selectin Polyclonal Antibody.. Secondary antibody was diluted at 1:20000