

Product Name: LRP11 Rabbit Polyclonal Antibody**Catalog #: APRab13428**

For research use only.

Summary

Description	Rabbit polyclonal Antibody
Host	Rabbit
Application	WB,IHC
Reactivity	Human,Rat,Mouse
Conjugation	Unconjugated
Modification	Unmodified
Isotype	IgG
Clonality	Polyclonal
Form	Liquid
Concentration	1mg/ml
Storage	Aliquot and store at -20°C (valid for 12 months). Avoid freeze/thaw cycles.
Shipping	Ice bags
Buffer	Liquid in PBS containing 50% glycerol, 0.5% protective protein and 0.02% New type preservative N.
Purification	Affinity purification

Application

Dilution Ratio	WB 1:500-1:2000,IHC 1:50-1:300
Molecular Weight	50kDa

Antigen Information

Gene Name	LRP11
Alternative Names	LRP11; Low-density lipoprotein receptor-related protein 11; LRP-11
Gene ID	84918.0
SwissProt ID	Q86VZ4
Immunogen	The antiserum was produced against synthesized peptide derived from human LRP11. AA range:48-97

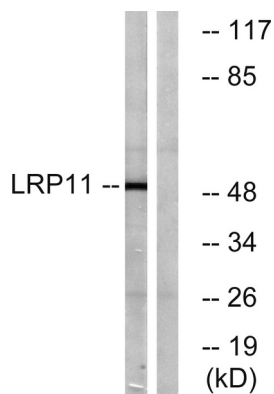
Background

similarity:Belongs to the LDLR family.,similarity:Contains 1 LDL-receptor class A domain.,similarity:Contains 1 MANSC

domain.,similarity:Contains 1 PKD domain.,similarity:Belongs to the LDLR family.,similarity:Contains 1 LDL-receptor class A domain.,similarity:Contains 1 MANSC domain.,similarity:Contains 1 PKD domain.,

Research Area

Image Data



Western blot analysis of lysates from Jurkat cells, using LRP11 Antibody. The lane on the right is blocked with the synthesized peptide.