
Product Name: LRG1 Rabbit Polyclonal Antibody**Catalog #: APRab13419**

For research use only.

Summary

Description	Rabbit polyclonal Antibody
Host	Rabbit
Application	WB,IHC,ELISA
Reactivity	Human,Rat,Mouse
Conjugation	Unconjugated
Modification	Unmodified
Isotype	IgG
Clonality	Polyclonal
Form	Liquid
Concentration	1mg/ml
Storage	Aliquot and store at -20°C (valid for 12 months). Avoid freeze/thaw cycles.
Shipping	Ice bags
Buffer	Liquid in PBS containing 50% glycerol, 0.5% protective protein and 0.02% New type preservative N.
Purification	Affinity purification

Application

Dilution Ratio	WB 1:500-1:2000,IHC 1:50-1:300,ELISA 1:2000-1:20000
Molecular Weight	58kDa

Antigen Information

Gene Name	LRG1
Alternative Names	LRG1; LRG; Leucine-rich alpha-2-glycoprotein; LRG
Gene ID	116844.0
SwissProt ID	P02750
Immunogen	Synthesized peptide derived from the C-terminal region of human LRG1.

Background

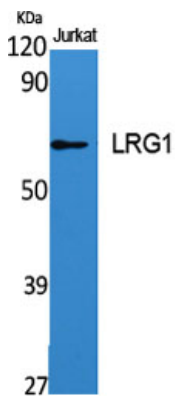
The leucine-rich repeat (LRR) family of proteins, including LRG1, have been shown to be involved in protein-protein interaction, signal transduction, and cell adhesion and development. LRG1 is expressed during granulocyte differentiation (O'Donnell et al.,

2002 [PubMed 12223515]).[supplied by OMIM, Mar 2008],similarity:Contains 8 LRR (leucine-rich) repeats.,tissue specificity:Plasma.,

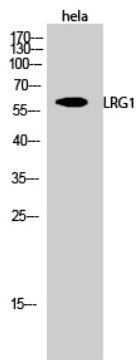
Research Area

Immunology

Image Data



Western Blot analysis of various cells using LRG1 Polyclonal Antibody



Western Blot analysis of HeLa cells using LRG1 Polyclonal Antibody