

Product Name: LPD lipase Rabbit Polyclonal Antibody**Catalog #: APRab13391**

For research use only.

Summary

Description	Rabbit polyclonal Antibody
Host	Rabbit
Application	WB,IHC,ICC/IF,ELISA
Reactivity	Human,Rat,Mouse
Conjugation	Unconjugated
Modification	Unmodified
Isotype	IgG
Clonality	Polyclonal
Form	Liquid
Concentration	1mg/ml
Storage	Aliquot and store at -20°C (valid for 12 months). Avoid freeze/thaw cycles.
Shipping	Ice bags
Buffer	Liquid in PBS containing 50% glycerol, 0.5% protective protein and 0.02% New type preservative N.
Purification	Affinity purification

Application

Dilution Ratio	WB 1:500-1:2000,IHC 1:100-1:300,ICC/IF 1:50-1:200,ELISA 1:5000-1:20000
Molecular Weight	53kDa

Antigen Information

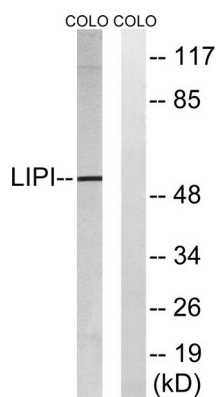
Gene Name	LIPI
Alternative Names	LIPI; LPDL; PRED5; Lipase member I; LIPI; Cancer/testis antigen 17; CT17; LPD lipase; Membrane-associated phosphatidic acid-selective phospholipase A1-beta; mPA-PLA1 beta
Gene ID	149998.0
SwissProt ID	Q6XZB0
Immunogen	The antiserum was produced against synthesized peptide derived from human LIPI. AA range:289-338

Background

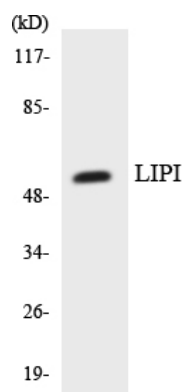
The protein encoded by this gene is a phospholipase that hydrolyzes phosphatidic acid to produce lysophosphatidic acid. Defects in this gene are a cause of susceptibility to familial hypertriglyceridemia. This gene is also expressed at high levels in Ewing family tumor cells. Alternative splicing results in multiple transcript variants. [provided by RefSeq, Dec 2014],disease:Defects in LIPI may be a cause of susceptibility to familial hypertriglyceridemia [MIM:145750]. Familial hypertriglyceridemia is a common inherited disorder in which the concentration of very low density lipoprotein (VLDL) is elevated in the plasma. This leads to increased risk of heart disease, obesity, and pancreatitis.,enzyme regulation:Inhibited by sodium vanadate.,function:Hydrolyzes specifically phosphatidic acid (PA) to produce lysophosphatidic acid (LPA).,PTM:Phosphorylated upon DNA damage, probably by ATM or ATR.,similarity:Belongs to the AB hydrolase superfamily. Lipase family.,subcellular location:May associate with lipid draft.,subunit:Interacts with heparin with a high affinity.,tissue specificity:Expressed in testis. Expressed exclusively at the connecting piece of the sperm.,

Research Area

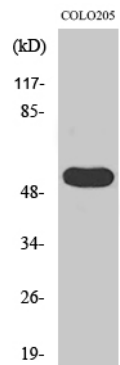
Image Data



Western blot analysis of lysates from COLO cells, using LIPI Antibody. The lane on the right is blocked with the synthesized peptide.



Western blot analysis of the lysates from HepG2 cells using LIPI antibody.



Western Blot analysis of various cells using LPD lipase Polyclonal Antibody