
Product Name: LMO3 Rabbit Polyclonal Antibody**Catalog #: APRab13357**

For research use only.

Summary

Description	Rabbit polyclonal Antibody
Host	Rabbit
Application	WB,IHC,ICC/IF,ELISA
Reactivity	Human,Mouse,Rat,Monkey
Conjugation	Unconjugated
Modification	Unmodified
Isotype	IgG
Clonality	Polyclonal
Form	Liquid
Concentration	1mg/ml
Storage	Aliquot and store at -20°C (valid for 12 months). Avoid freeze/thaw cycles.
Shipping	Ice bags
Buffer	Liquid in PBS containing 50% glycerol, 0.5% protective protein and 0.02% New type preservative N.
Purification	Affinity purification

Application

Dilution Ratio	WB 1:500-1:2000,IHC 1:100-1:300,ICC/IF 1:50-1:200,ELISA 1:5000-1:20000
Molecular Weight	17kDa

Antigen Information

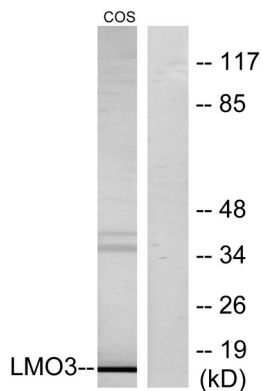
Gene Name	LMO3
Alternative Names	LMO3; RBTN3; RBTN2L2; RHOM3; LIM domain only protein 3; LMO-3; Neuronal-specific transcription factor DAT1; Rhombotin-3
Gene ID	55885.0
SwissProt ID	Q8TAP4
Immunogen	The antiserum was produced against synthesized peptide derived from human LMO3. AA range:96-145

Background

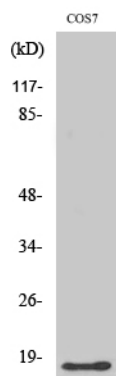
LIM domain only 3(LMO3) Homo sapiens The protein encoded by this gene belongs to the rhombotin family of cysteine-rich LIM domain oncogenes. This gene is predominantly expressed in the brain. Related family members, LMO1 and LMO2 on chromosome 11, have been reported to be involved in chromosomal translocations in T-cell leukemia. Many alternatively spliced transcript variants have been found for this gene. [provided by RefSeq, Aug 2011],similarity:Contains 2 LIM zinc-binding domains.,

Research Area

Image Data



Western blot analysis of lysates from COS7 cells, using LMO3 Antibody. The lane on the right is blocked with the synthesized peptide.



Western Blot analysis of various cells using LMO3 Polyclonal Antibody