

Product Name: LIR-7 Rabbit Polyclonal Antibody**Catalog #: APRab13334**

For research use only.

Summary

Description	Rabbit polyclonal Antibody
Host	Rabbit
Application	WB,IHC,ICC/IF,ELISA
Reactivity	Human,Rat,Mouse
Conjugation	Unconjugated
Modification	Unmodified
Isotype	IgG
Clonality	Polyclonal
Form	Liquid
Concentration	1mg/ml
Storage	Aliquot and store at -20°C (valid for 12 months). Avoid freeze/thaw cycles.
Shipping	Ice bags
Buffer	Liquid in PBS containing 50% glycerol, 0.5% protective protein and 0.02% New type preservative N.
Purification	Affinity purification

Application

Dilution Ratio	WB 1:500-1:2000,IHC 1:100-1:300,ICC/IF 1:50-1:200,ELISA 1:10000-1:20000
Molecular Weight	53kDa

Antigen Information

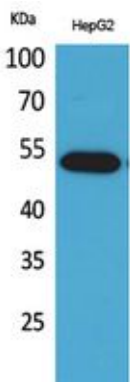
Gene Name	LILRA2
Alternative Names	LILRA2; ILT1; LIR7; Leukocyte immunoglobulin-like receptor subfamily A member 2; CD85 antigen-like family member H; Immunoglobulin-like transcript 1; ILT-1; Leukocyte immunoglobulin-like receptor 7; LIR-7; CD85h
Gene ID	11027.0
SwissProt ID	Q8N149
Immunogen	The antiserum was produced against synthesized peptide derived from the Internal region of human LILRA2. AA range:121-170

Background

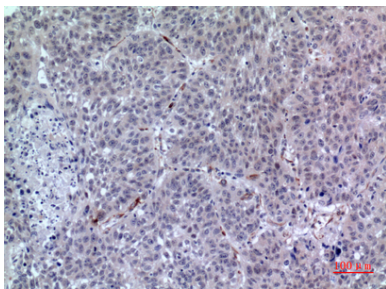
This gene encodes a member of a family of immunoreceptors that are expressed predominantly on monocytes and B cells, and at lower levels on dendritic cells and natural killer cells. The encoded protein is an activating receptor that inhibits dendritic cell differentiation and antigen presentation and suppresses innate immune response. Alternatively spliced transcript variants encoding different isoforms have been found. This gene is located in a cluster of related genes on chromosome 19 and there is a pseudogene for this gene on chromosome 3. [provided by RefSeq, Mar 2014],function:May act as receptor for class I MHC antigens.,similarity:Contains 4 Ig-like C2-type (immunoglobulin-like) domains.,tissue specificity:Expression levels are very low or not detectable on monocytes, T-cells, B-cells, dendritic cells and natural killer (NK) cells.,

Research Area

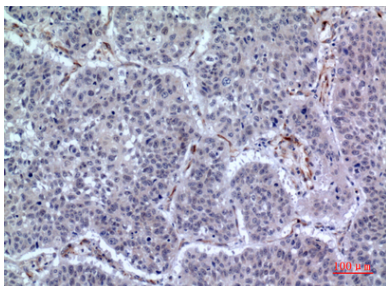
Image Data



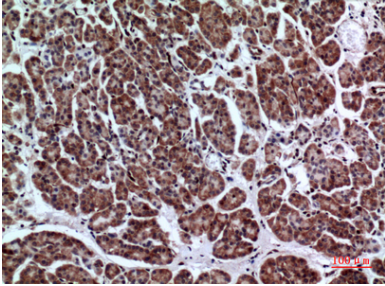
Western Blot analysis of HepG2 cells using LIR-7 Polyclonal Antibody.. Secondary antibody was diluted at 1:20000



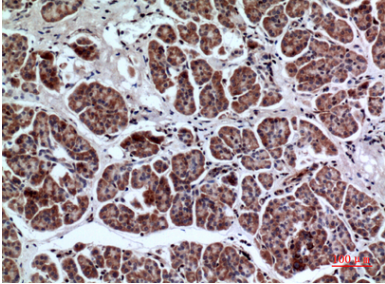
Immunohistochemical analysis of paraffin-embedded human-lung, antibody was diluted at 1:100



Immunohistochemical analysis of paraffin-embedded human-lung, antibody was diluted at 1:100



Immunohistochemical analysis of paraffin-embedded human-pancreas, antibody was diluted at 1:100



Immunohistochemical analysis of paraffin-embedded human-pancreas, antibody was diluted at 1:100