
Product Name: LI-cadherin Rabbit Polyclonal Antibody**Catalog #: APRab13302**

For research use only.

Summary

Description	Rabbit polyclonal Antibody
Host	Rabbit
Application	WB,IHC,ICC/IF,ELISA
Reactivity	Human,Rat,Mouse
Conjugation	Unconjugated
Modification	Unmodified
Isotype	IgG
Clonality	Polyclonal
Form	Liquid
Concentration	1mg/ml
Storage	Aliquot and store at -20°C (valid for 12 months). Avoid freeze/thaw cycles.
Shipping	Ice bags
Buffer	Liquid in PBS containing 50% glycerol, 0.5% protective protein and 0.02% New type preservative N.
Purification	Affinity purification

Application

Dilution Ratio	WB 1:500-1:2000,IHC 1:100-1:300,ICC/IF 1:200-1:1000,ELISA 1:20000-1:40000
Molecular Weight	99kDa

Antigen Information

Gene Name	CDH17
Alternative Names	CDH17; Cadherin-17; Intestinal peptide-associated transporter HPT-1; Liver-intestine cadherin; LI-cadherin
Gene ID	1015.0
SwissProt ID	Q12864
Immunogen	The antiserum was produced against synthesized peptide derived from human CDH17. AA range:341-390

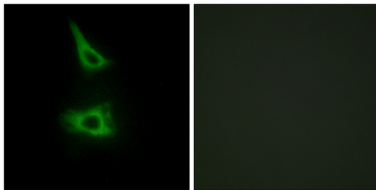
Background

This gene is a member of the cadherin superfamily, genes encoding calcium-dependent, membrane-associated glycoproteins. The encoded protein is cadherin-like, consisting of an extracellular region, containing 7 cadherin domains, and a transmembrane region but lacking the conserved cytoplasmic domain. The protein is a component of the gastrointestinal tract and pancreatic ducts, acting as an intestinal proton-dependent peptide transporter in the first step in oral absorption of many medically important peptide-based drugs. The protein may also play a role in the morphological organization of liver and intestine. Alternative splicing results in multiple transcript variants. [provided by RefSeq, Jan 2009],function:Cadherins are calcium dependent cell adhesion proteins. They preferentially interact with themselves in a homophilic manner in connecting cells; cadherins may thus contribute to the sorting of heterogeneous cell types. LI-cadherin may have a role in the morphological organization of liver and intestine. Involved in intestinal peptide transport.,similarity:Contains 7 cadherin domains.,tissue specificity:Expressed in the gastrointestinal tract and pancreatic duct. Not detected in kidney, lung, liver, brain, adrenal gland and skin.,

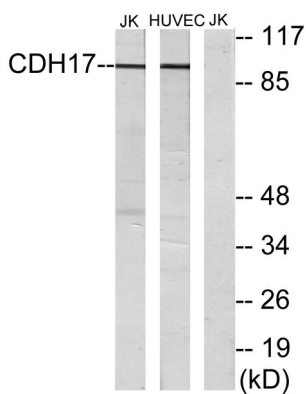
Research Area

Adherens_Junction

Image Data



Immunofluorescence analysis of HeLa cells, using CDH17 Antibody. The picture on the right is blocked with the synthesized peptide.



Western blot analysis of lysates from Jurkat and HUVEC cells, using CDH17 Antibody. The lane on the right is blocked with the synthesized peptide.

Western Blot analysis of Jurkat cells using LI-cadherin Polyclonal Antibody

