

**Product Name: LGR6 Rabbit Polyclonal Antibody****Catalog #: APRab13293**

For research use only.

**Summary**

|                      |   |
|----------------------|---|
| <b>Description</b>   | Rabbit polyclonal Antibody  |
| <b>Host</b>          | Rabbit  |
| <b>Application</b>   | WB,IHC  |
| <b>Reactivity</b>    | Human,Rat,Mouse   |
| <b>Conjugation</b>   | Unconjugated  |
| <b>Modification</b>  | Unmodified  |
| <b>Isotype</b>       | IgG   |
| <b>Clonality</b>     | Polyclonal  |
| <b>Form</b>          | Liquid  |
| <b>Concentration</b> | 1mg/ml  |
| <b>Storage</b>       | Aliquot and store at -20°C (valid for 12 months). Avoid freeze/thaw cycles.                       |
| <b>Shipping</b>      | Ice bags  |
| <b>Buffer</b>        | Liquid in PBS containing 50% glycerol, 0.5% protective protein and 0.02% New type preservative N. |
| <b>Purification</b>  | Affinity purification   |

**Application**

|                         |                                |
|-------------------------|--------------------------------|
| <b>Dilution Ratio</b>   | WB 1:500-1:2000,IHC 1:50-1:300 |
| <b>Molecular Weight</b> | 104kDa                         |

**Antigen Information**

|                          |  |
|--------------------------|--|
| <b>Gene Name</b>         | LGR6   |
| <b>Alternative Names</b> | LGR6; Leucine-rich repeat-containing G-protein coupled receptor 6                                |
| <b>Gene ID</b>           | 59352.0  |
| <b>SwissProt ID</b>      | Q9HBX8   |
| <b>Immunogen</b>         | The antiserum was produced against synthesized peptide derived from human LGR6. AA range:471-520 |

**Background**

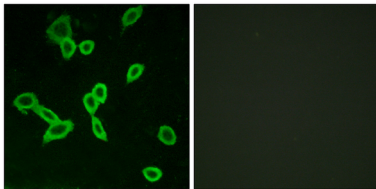
This gene encodes a member of the leucine-rich repeat-containing subgroup of the G protein-coupled 7-transmembrane

protein superfamily. The encoded protein is a glycoprotein hormone receptor with a large N-terminal extracellular domain that contains leucine-rich repeats important for the formation of a horseshoe-shaped interaction motif for ligand binding. Alternative splicing of this gene results in multiple transcript variants. [provided by RefSeq, Jul 2008],function:Orphan receptor.,PTM:Phosphorylated upon DNA damage, probably by ATM or ATR.,similarity:Belongs to the G-protein coupled receptor 1 family.,similarity:Contains 16 LRR (leucine-rich) repeats.,

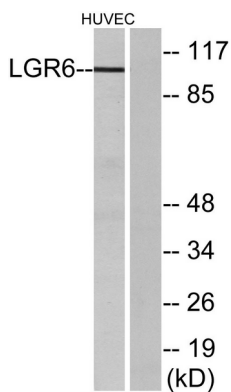
## Research Area

Signal Transduction

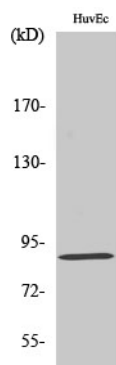
## Image Data



Immunofluorescence analysis of LOVO cells, using LGR6 Antibody. The picture on the right is blocked with the synthesized peptide.



Western blot analysis of lysates from HUVEC cells, using LGR6 Antibody. The lane on the right is blocked with the synthesized peptide.



Western Blot analysis of various cells using LGR6 Polyclonal Antibody diluted at 1:500