
Product Name: Lfc Rabbit Polyclonal Antibody**Catalog #: APRab13284**

For research use only.

Summary

Description	Rabbit polyclonal Antibody
Host	Rabbit
Application	WB,IHC,ELISA
Reactivity	Human,Mouse,Rat
Conjugation	Unconjugated
Modification	Unmodified
Isotype	IgG
Clonality	Polyclonal
Form	Liquid
Concentration	1mg/ml
Storage	Aliquot and store at -20°C (valid for 12 months). Avoid freeze/thaw cycles.
Shipping	Ice bags
Buffer	Liquid in PBS containing 50% glycerol, 0.5% protective protein and 0.02% New type preservative N.
Purification	Affinity purification

Application

Dilution Ratio	WB 1:500-1:2000,IHC 1:50-1:300,ELISA 1:2000-1:20000
Molecular Weight	111kDa

Antigen Information

Gene Name	ARHGEF2 ARHGEF2; KIAA0651; LFP40; Rho guanine nucleotide exchange factor 2; Guanine nucleotide
Alternative Names	exchange factor H1; GEF-H1; Microtubule-regulated Rho-GEF; Proliferating cell nucleolar antigen p40
Gene ID	9181.0
SwissProt ID	Q92974
Immunogen	The antiserum was produced against synthesized peptide derived from C-terminal human ARHGEF2. AA range:851-900

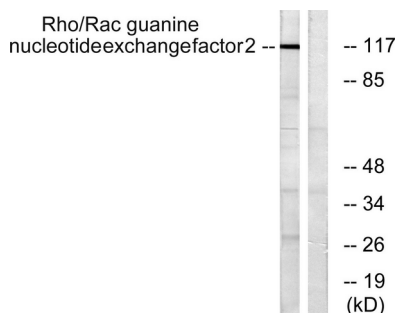
Background

Rho GTPases play a fundamental role in numerous cellular processes that are initiated by extracellular stimuli that work through G protein coupled receptors. The encoded protein may form complex with G proteins and stimulate rho-dependent signals. Alternatively spliced transcript variants encoding different isoforms have been identified.[provided by RefSeq, Jun 2009],domain:The DH (DBL-homology) domain interacts with and promotes loading of GTP on RhoA.,domain:The PH (pleckstrin-homology) domain is involved in microtubule binding and targeting to tight junctions.,function:Activates Rho-GTPases by promoting the exchange of GDP for GTP. May be involved in epithelial barrier permeability, cell motility and polarization, dendritic spine morphology, antigen presentation, leukemic cell differentiation, cell cycle regulation, and cancer. Binds Rac-GTPases, but does not seem to promote nucleotide exchange activity toward Rac-GTPases, which was uniquely reported in PubMed:9857026. May stimulate instead the cortical activity of Rac. Inactive toward CDC42, TC10, or Ras-GTPases.,online information:ARHGEF2 entry,PTM:Phosphorylation of Ser-886 by PAK1 induces binding to protein 14-3-3 zeta, promoting its relocation to microtubules and the inhibition of its activity. Phosphorylated by STK6 and CDK1 during mitosis, which negatively regulates its activity. Phosphorylation by MAPK1 or MAPK3 increases nucleotide exchange activity. Phosphorylation by PAK4 releases GEF-H1 from the microtubules.,sequence caution:Sequence differs at a large extent from the sequence shown in the paper.,similarity:Contains 1 DH (DBL-homology) domain.,similarity:Contains 1 PH domain.,similarity:Contains 1 phorbol-ester/DAG-type zinc finger.,subcellular location:Localizes to the tips of cortical microtubules of the mitotic spindle during cell division, and is further released upon microtubule depolymerization.,subunit:Interacts with 14-3-3 zeta; when phosphorylated at Ser-886. Interacts with the kinases PAK4, AURKA/STK6 and MAPK1. Interacts with RHOA and RAC1.,

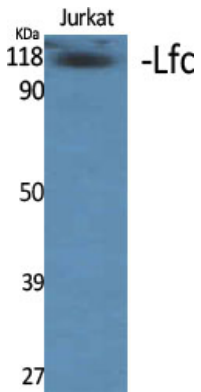
Research Area

Regulation of Actin Dynamics; AMPK

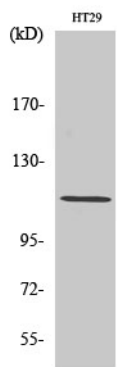
Image Data



Western blot analysis of lysates from NIH/3T3 cells, using Rho/Rac Guanine Nucleotide Exchange Factor 2 Antibody. The lane on the right is blocked with the synthesized peptide.



Western Blot analysis of various cells using Lfc Polyclonal Antibody diluted at 1 : 1000



Western Blot analysis of HT29 cells using Lfc Polyclonal Antibody diluted at 1 : 1000