

---

**Product Name: LDOC1L Rabbit Polyclonal Antibody****Catalog #: APRab13273**

For research use only.

**Summary**

<b>Description</b>	Rabbit polyclonal Antibody
<b>Host</b>	Rabbit
<b>Application</b>	WB,IHC,ICC/IF,ELISA
<b>Reactivity</b>	Human,Mouse
<b>Conjugation</b>	Unconjugated
<b>Modification</b>	Unmodified
<b>Isotype</b>	IgG
<b>Clonality</b>	Polyclonal
<b>Form</b>	Liquid
<b>Concentration</b>	1mg/ml
<b>Storage</b>	Aliquot and store at -20°C (valid for 12 months). Avoid freeze/thaw cycles.
<b>Shipping</b>	Ice bags
<b>Buffer</b>	Liquid in PBS containing 50% glycerol, 0.5% protective protein and 0.02% New type preservative N.
<b>Purification</b>	Affinity purification

**Application**

<b>Dilution Ratio</b>	WB 1:500-1:2000,IHC 1:100-1:300,ICC/IF 1:50-1:200,ELISA 1:10000-1:20000
<b>Molecular Weight</b>	24kDa

**Antigen Information**

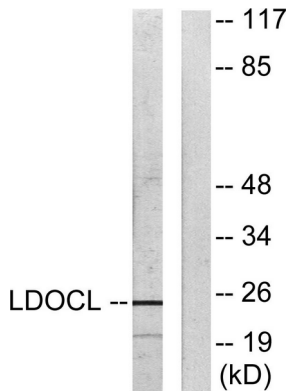
<b>Gene Name</b>	LDOC1L
<b>Alternative Names</b>	LDOC1L; MAR6; MART6; Protein LDOC1L; Leucine zipper protein down-regulated in cancer cells-like; Mammalian retrotransposon-derived protein 6
<b>Gene ID</b>	84247.0
<b>SwissProt ID</b>	Q6ICC9
<b>Immunogen</b>	The antiserum was produced against synthesized peptide derived from human LDOC1L. AA range:141-190

**Background**

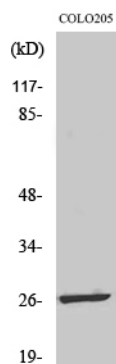
similarity:Belongs to the LDOC1 family.,similarity:Belongs to the LDOC1 family.,

## Research Area

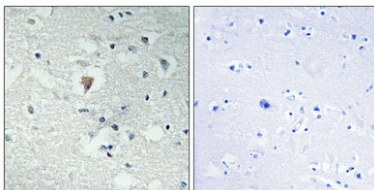
## Image Data



Western blot analysis of lysates from COLO205 cells, using LDOC1L Antibody. The lane on the right is blocked with the synthesized peptide.



Western Blot analysis of various cells using LDOC1L Polyclonal Antibody



Immunohistochemical analysis of paraffin-embedded Human brain. Antibody was diluted at 1:100 (4°, overnight). High-pressure and temperature Tris-EDTA, pH 8.0 was used for antigen retrieval. Negative control (right) obtained from antibody was pre-absorbed by immunogen peptide.