
Product Name: LDLRAD2 Rabbit Polyclonal Antibody**Catalog #: APRab13270**

For research use only.

Summary

Description	Rabbit polyclonal Antibody
Host	Rabbit
Application	WB,IHC,ELISA
Reactivity	Human,Rat,Mouse
Conjugation	Unconjugated
Modification	Unmodified
Isotype	IgG
Clonality	Polyclonal
Form	Liquid
Concentration	1mg/ml
Storage	Aliquot and store at -20°C (valid for 12 months). Avoid freeze/thaw cycles.
Shipping	Ice bags
Buffer	Liquid in PBS containing 50% glycerol, 0.5% protective protein and 0.02% New type preservative N.
Purification	Affinity purification

Application

Dilution Ratio	WB 1:500-1:2000,IHC 1:50-1:300,ELISA 1:2000-1:20000
Molecular Weight	29kDa

Antigen Information

Gene Name	LDLRAD2
Alternative Names	LDLRAD2; Low-density lipoprotein receptor class A domain-containing protein 2
Gene ID	401944.0
SwissProt ID	Q5SZ11
Immunogen	The antiserum was produced against synthesized peptide derived from human LDLRAD2. AA range:130-179

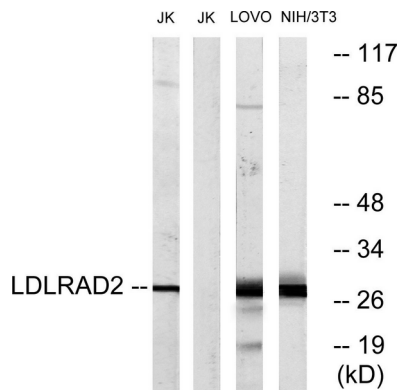
Background

similarity:Belongs to the LDLR family.,similarity:Contains 1 LDL-receptor class A domain.,similarity:Belongs to the LDLR

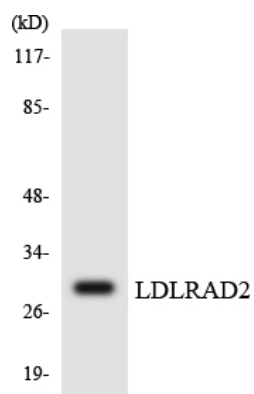
family, similarity: Contains 1 LDL-receptor class A domain.,

Research Area

Image Data



Western blot analysis of lysates from Jurkat, LOVO, and NIH/3T3 cells, using LDLRAD2 Antibody. The lane on the right is blocked with the synthesized peptide.



Western blot analysis of the lysates from HepG2 cells using LDLRAD2 antibody.



Western Blot analysis of various cells using LDLRAD2 Polyclonal Antibody diluted at 1: 500