
Product Name: Latherin Rabbit Polyclonal Antibody**Catalog #: APRab13231**

For research use only.

Summary

Description	Rabbit polyclonal Antibody
Host	Rabbit
Application	IHC,ICC/IF,ELISA
Reactivity	Human,Rat,Mouse
Conjugation	Unconjugated
Modification	Unmodified
Isotype	IgG
Clonality	Polyclonal
Form	Liquid
Concentration	1mg/ml
Storage	Aliquot and store at -20°C (valid for 12 months). Avoid freeze/thaw cycles.
Shipping	Ice bags
Buffer	Liquid in PBS containing 50% glycerol, 0.5% protective protein and 0.02% New type preservative N.
Purification	Affinity purification

Application

Dilution Ratio	IHC 1:100-1:300,ICC/IF 1:200-1:1000,ELISA 1:10000-1:20000
Molecular Weight	19kDa

Antigen Information

Gene Name	LATH
Alternative Names	LATH; BASE; Putative latherin; Breast cancer and salivary gland-expressed protein
Gene ID	607627.0
SwissProt ID	Q86YQ2
Immunogen	The antiserum was produced against synthesized peptide derived from human LATH. AA range:71-120

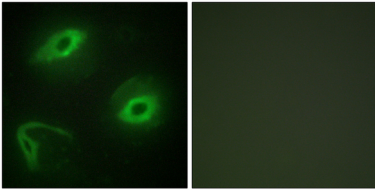
Background

LATH, also named as BASE, belongs to the BPI/LBP/Plunc superfamily and Plunc family. It is the major protein in sweat, has

surfactant properties.

Research Area

Image Data



Immunofluorescence analysis of HeLa cells, using LATH Antibody. The picture on the right is blocked with the synthesized peptide.