
Product Name: LASS4 Rabbit Polyclonal Antibody**Catalog #: APRab13221**

For research use only.

Summary

| | |
|----------------------|---|
| Description | Rabbit polyclonal Antibody |
| Host | Rabbit |
| Application | WB,IHC,ICC/IF,ELISA |
| Reactivity | Human,Rat,Mouse |
| Conjugation | Unconjugated |
| Modification | Unmodified |
| Isotype | IgG |
| Clonality | Polyclonal |
| Form | Liquid |
| Concentration | 1mg/ml |
| Storage | Aliquot and store at -20°C (valid for 12 months). Avoid freeze/thaw cycles. |
| Shipping | Ice bags |
| Buffer | Liquid in PBS containing 50% glycerol, 0.5% protective protein and 0.02% New type preservative N. |
| Purification | Affinity purification |

Application

| | |
|-------------------------|--|
| Dilution Ratio | WB 1:500-1:2000,IHC 1:100-1:300,ICC/IF 1:50-1:200,ELISA 1:5000-1:20000 |
| Molecular Weight | 46kDa |

Antigen Information

| | |
|--------------------------|---|
| Gene Name | CERS4 |
| Alternative Names | CERS4; LASS4; Ceramide synthase 4; CerS4; LAG1 longevity assurance homolog 4 |
| Gene ID | 79603.0 |
| SwissProt ID | Q9HA82 |
| Immunogen | The antiserum was produced against synthesized peptide derived from human LASS4. AA range:41-90 |

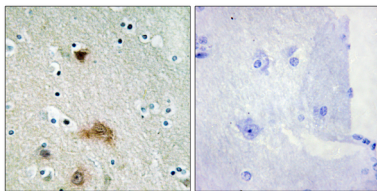
Background

function:May be either a bona fide (dihydro)ceramide synthase or a modulator of its activity. When overexpressed in cells is

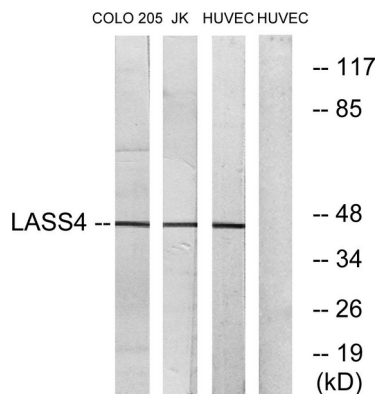
involved in the production of sphingolipids containing different fatty acid donors (N-linked stearyl- (C18) or arachidoyl- (C20) ceramides) in a fumonis B1-independent manner.,similarity:Contains 1 homeobox DNA-binding domain.,similarity:Contains 1 TLC (TRAM/LAG1/CLN8) domain.,function:May be either a bona fide (dihydro)ceramide synthase or a modulator of its activity. When overexpressed in cells is involved in the production of sphingolipids containing different fatty acid donors (N-linked stearyl- (C18) or arachidoyl- (C20) ceramides) in a fumonis B1-independent manner.,similarity:Contains 1 homeobox DNA-binding domain.,similarity:Contains 1 TLC (TRAM/LAG1/CLN8) domain.,

Research Area

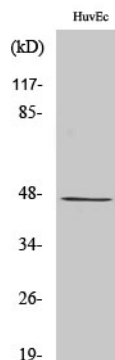
Image Data



Immunohistochemistry analysis of paraffin-embedded human brain tissue, using LASS4 Antibody. The picture on the right is blocked with the synthesized peptide.



Western blot analysis of lysates from HUVEC, COLO, and Jurkat cells, using LASS4 Antibody. The lane on the right is blocked with the synthesized peptide.



Western Blot analysis of various cells using LASS4 Polyclonal Antibody