

Product Name: LARG Rabbit Polyclonal Antibody**Catalog #: APRab13217**

For research use only.

Summary

Description	Rabbit polyclonal Antibody
Host	Rabbit
Application	WB,IHC
Reactivity	Human,Mouse,Rat
Conjugation	Unconjugated
Modification	Unmodified
Isotype	IgG
Clonality	Polyclonal
Form	Liquid
Concentration	1mg/ml
Storage	Aliquot and store at -20°C (valid for 12 months). Avoid freeze/thaw cycles.
Shipping	Ice bags
Buffer	Liquid in PBS containing 50% glycerol, 0.5% protective protein and 0.02% New type preservative N.
Purification	Affinity purification

Application

Dilution Ratio	WB 1:500-1:2000,IHC 1:50-1:300
Molecular Weight	173kDa

Antigen Information

Gene Name	ARHGEF12
Alternative Names	ARHGEF12; KIAA0382; LARG; Rho guanine nucleotide exchange factor 12; Leukemia-associated RhoGEF
Gene ID	23365.0
SwissProt ID	Q9NZN5
Immunogen	The antiserum was produced against synthesized peptide derived from human ARHGEF12. AA range:449-498

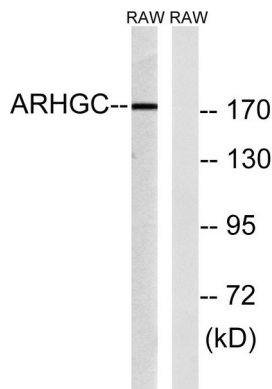
Background

Rho GTPases play a fundamental role in numerous cellular processes that are initiated by extracellular stimuli working through G protein-coupled receptors. The encoded protein may form a complex with G proteins and stimulate Rho-dependent signals. This protein has been observed to form a myeloid/lymphoid fusion partner in acute myeloid leukemia. Three transcript variants encoding different isoforms have been found for this gene. [provided by RefSeq, Jul 2014],disease:A chromosomal aberration involving ARHGEF12 may be a cause of acute leukemia. Translocation t(11;11)(q23;23) with MLL.,function:May play a role in the regulation of RhoA GTPase by guanine nucleotide-binding alpha-12 (GNA12) and alpha-13 (GNA13). Acts as guanine nucleotide exchange factor (GEF) for RhoA GTPase and may act as GTPase-activating protein (GAP) for GNA12 and GNA13.,PTM:Phosphorylated upon DNA damage, probably by ATM or ATR.,sequence caution:Contaminating sequence. Potential poly-A sequence.,similarity:Contains 1 DH (DBL-homology) domain.,similarity:Contains 1 PDZ (DHR) domain.,similarity:Contains 1 PH domain.,similarity:Contains 1 RGSL (RGS-like) domain.,subcellular location:Translocated to the membrane upon stimulation.,subunit:Interacts with GNA12 and GNA13, probably through the RGS-like domain. Interacts with RHOA, PLXNB1 and PLXNB2. Interacts through its PDZ domain with IGF1R beta subunit.,tissue specificity:Ubiquitously expressed. Isoform 2 is found in jejunum and testis.,

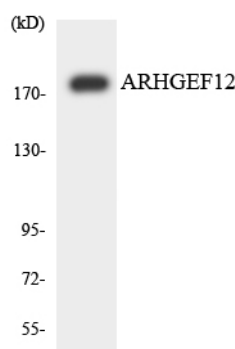
Research Area

Regulation of Actin Dynamics; AMPK

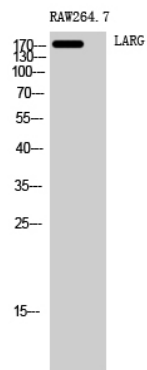
Image Data



Western blot analysis of lysates from RAW264.7 cells, using ARHGEF12 Antibody. The lane on the right is blocked with the synthesized peptide.



Western blot analysis of the lysates from HUVEC cells using ARHGEF12 antibody.



Western Blot analysis of RAW264.7 cells using LARG Polyclonal Antibody