
Product Name: Laminin γ -3 Rabbit Polyclonal Antibody**Catalog #: APRab13205**

For research use only.

Summary

Description	Rabbit polyclonal Antibody
Host	Rabbit
Application	WB,IHC,ICC/IF,ELISA
Reactivity	Human,Mouse
Conjugation	Unconjugated
Modification	Unmodified
Isotype	IgG
Clonality	Polyclonal
Form	Liquid
Concentration	1mg/ml
Storage	Aliquot and store at -20°C (valid for 12 months). Avoid freeze/thaw cycles.
Shipping	Ice bags
Buffer	Liquid in PBS containing 50% glycerol, 0.5% protective protein and 0.02% New type preservative N.
Purification	Affinity purification

Application

Dilution Ratio	WB 1:500-1:2000,IHC 1:100-1:300,ICC/IF 1:200-1:1000,ELISA 1:20000-1:40000
Molecular Weight	170kDa

Antigen Information

Gene Name	LAMC3
Alternative Names	LAMC3; Laminin subunit gamma-3; Laminin-12 subunit gamma; Laminin-14 subunit gamma; Laminin-15 subunit gamma
Gene ID	10319.0
SwissProt ID	Q9Y6N6
Immunogen	The antiserum was produced against synthesized peptide derived from human LAMC3. AA range:1361-1410

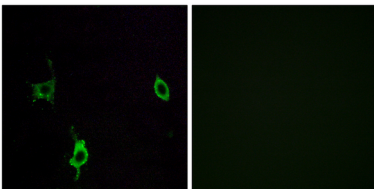
Background

Laminins, a family of extracellular matrix glycoproteins, are the major noncollagenous constituent of basement membranes. They have been implicated in a wide variety of biological processes including cell adhesion, differentiation, migration, signaling, neurite outgrowth and metastasis. Laminins are composed of 3 non identical chains: laminin alpha, beta and gamma (formerly A, B1, and B2, respectively) and they form a cruciform structure consisting of 3 short arms, each formed by a different chain, and a long arm composed of all 3 chains. Each laminin chain is a multidomain protein encoded by a distinct gene. Several isoforms of each chain have been described. Different alpha, beta and gamma chain isomers combine to give rise to different heterotrimeric laminin isoforms which are designated by Arabic numerals in the order of their discovery, i.e. alpha1beta1gamma1 heterotrimer is laminin 1. The bioldomain:Domain IV is globular.,domain:The alpha-helical domains I and II are thought to interact with other laminin chains to form a coiled coil structure.,function:Binding to cells via a high affinity receptor, laminin is thought to mediate the attachment, migration and organization of cells into tissues during embryonic development by interacting with other extracellular matrix components.,similarity:Contains 1 laminin IV type A domain.,similarity:Contains 1 laminin N-terminal domain.,similarity:Contains 11 laminin EGF-like domains.,subunit:Laminin is a complex glycoprotein, consisting of three different polypeptide chains (alpha, beta, gamma), which are bound to each other by disulfide bonds into a cross-shaped molecule comprising one long and three short arms with globules at each end. Gamma-3 is a subunit of laminin-12.,tissue specificity:Broadly expressed in: skin, heart, lung, and the reproductive tracts.,

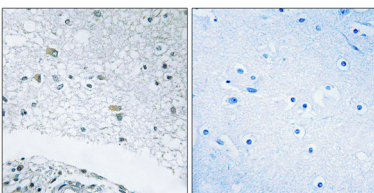
Research Area

Focal adhesion;ECM-receptor interaction;Pathways in cancer;Small cell lung cancer;

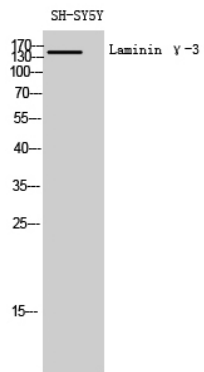
Image Data



Immunofluorescence analysis of LOVO cells, using LAMC3 Antibody. The picture on the right is blocked with the synthesized peptide.



Immunohistochemistry analysis of paraffin-embedded human brain tissue, using LAMC3 Antibody. The picture on the right is blocked with the synthesized peptide.



Western Blot analysis of SH-SY5Y cells using Laminin γ -3 Polyclonal Antibody diluted at 1: 1000