
Product Name: Laminin α -1 Rabbit Polyclonal Antibody**Catalog #: APRab13196**

For research use only.

Summary

Description	Rabbit polyclonal Antibody
Host	Rabbit
Application	WB,IHC,ELISA
Reactivity	Human,Rat,Mouse
Conjugation	Unconjugated
Modification	Unmodified
Isotype	IgG
Clonality	Polyclonal
Form	Liquid
Concentration	1mg/ml
Storage	Aliquot and store at -20°C (valid for 12 months). Avoid freeze/thaw cycles.
Shipping	Ice bags
Buffer	Liquid in PBS containing 50% glycerol, 0.5% protective protein and 0.02% New type preservative N.
Purification	Affinity purification

Application

Dilution Ratio WB 1:500-1:2000,IHC 1:50-1:300,ELISA 1:2000-1:20000

Molecular Weight

Antigen Information

Gene Name	LAMA1
Alternative Names	LAMA1; LAMA; Laminin subunit alpha-1; Laminin A chain; Laminin-1 subunit alpha; Laminin-3 subunit alpha; S-laminin subunit alpha; S-LAM alpha
Gene ID	284217.0
SwissProt ID	P25391
Immunogen	The antiserum was produced against synthesized peptide derived from human LAMA1. AA range:2501-2550

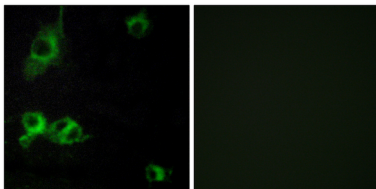
Background

This gene encodes one of the alpha 1 subunits of laminin. The laminins are a family of extracellular matrix glycoproteins that have a heterotrimeric structure consisting of an alpha, beta and gamma chain. These proteins make up a major component of the basement membrane and have been implicated in a wide variety of biological processes including cell adhesion, differentiation, migration, signaling, neurite outgrowth and metastasis. Mutations in this gene may be associated with Poretti-Boltshauser syndrome. [provided by RefSeq, Sep 2014],domain:Domains VI, IV and G are globular.,domain:The alpha-helical domains I and II are thought to interact with other laminin chains to form a coiled coil structure.,function:Binding to cells via a high affinity receptor, laminin is thought to mediate the attachment, migration and organization of cells into tissues during embryonic development by interacting with other extracellular matrix components.,similarity:Contains 1 laminin N-terminal domain.,similarity:Contains 17 laminin EGF-like domains.,similarity:Contains 2 laminin IV type A domains.,similarity:Contains 5 laminin G-like domains.,subcellular location:Major component.,subunit:Laminin is a complex glycoprotein, consisting of three different polypeptide chains (alpha, beta, gamma), which are bound to each other by disulfide bonds into a cross-shaped molecule comprising one long and three short arms with globules at each end. Alpha-1 is a subunit of laminin-1 (EHS laminin) and laminin-3 (S-laminin),

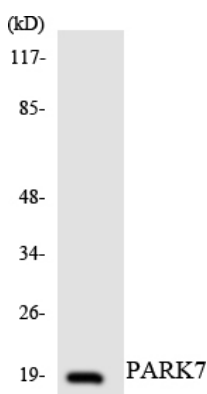
Research Area

Focal adhesion;ECM-receptor interaction;Pathways in cancer;Small cell lung cancer;

Image Data



Immunofluorescence analysis of COS7 cells, using LAMA1 Antibody. The picture on the right is blocked with the synthesized peptide.



Western blot analysis of the lysates from HUVEC cells using PARK7 antibody.