

Product Name: KV4.1 Rabbit Polyclonal Antibody**Catalog #: APRab13168**

For research use only.

Summary

Description	Rabbit polyclonal Antibody
Host	Rabbit
Application	WB,IHC,ICC/IF,ELISA
Reactivity	Human,Mouse
Conjugation	Unconjugated
Modification	Unmodified
Isotype	IgG
Clonality	Polyclonal
Form	Liquid
Concentration	1mg/ml
Storage	Aliquot and store at -20°C (valid for 12 months). Avoid freeze/thaw cycles.
Shipping	Ice bags
Buffer	Liquid in PBS containing 50% glycerol, 0.5% protective protein and 0.02% New type preservative N.
Purification	Affinity purification

Application

Dilution Ratio	WB 1:500-1:2000,IHC 1:100-1:300,ICC/IF 1:50-1:200,ELISA 1:10000-1:20000
Molecular Weight	70kDa

Antigen Information

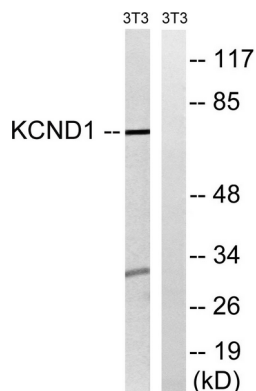
Gene Name	KCND1
Alternative Names	KCND1; Potassium voltage-gated channel subfamily D member 1; Voltage-gated potassium channel subunit Kv4.1
Gene ID	3750.0
SwissProt ID	Q9NSA2
Immunogen	The antiserum was produced against synthesized peptide derived from human KCND1. AA range:558-607

Background

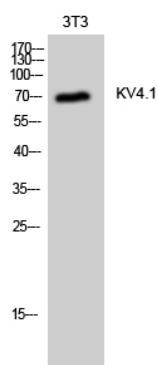
This gene encodes a multipass membrane protein that comprises the pore subunit of the voltage-gated A-type potassium channel, which functions in the repolarization of membrane action potentials. Activity of voltage-gated potassium channels is important in a number of physiological processes, among them the regulation of neurotransmitter release, heart rate, insulin secretion, and smooth muscle contraction. [provided by RefSeq, Aug 2013],domain:The segment S4 is probably the voltage-sensor and is characterized by a series of positively charged amino acids at every third position.,function:Pore-forming (alpha) subunit of voltage-gated rapidly inactivating A-type potassium channels. May contribute to I(To) current in heart and I(Sa) current in neurons. Channel properties are modulated by interactions with other alpha subunits and with regulatory subunits.,similarity:Belongs to the potassium channel family. D (Shal) subfamily.,subunit:Homotetramer or heterotetramer with KCND2 and/or KCND3. Associates with the regulatory subunits KCNIP1, KCNIP2, KCNIP3 and KCNIP4 (By similarity). Interacts with DPP10.,tissue specificity:Widely expressed. Highly expressed in brain, in particular in cerebellum and thalamus; detected at lower levels in the other parts of the brain.,

Research Area

Image Data



Western blot analysis of lysates from NIH/3T3 cells, using KCND1 Antibody. The lane on the right is blocked with the synthesized peptide.



Western Blot analysis of 3T3 cells using KV4.1 Polyclonal Antibody