

---

**Product Name: KOX4 Rabbit Polyclonal Antibody****Catalog #: APRab13093**

For research use only.

**Summary**

<b>Description</b>	Rabbit polyclonal Antibody
<b>Host</b>	Rabbit
<b>Application</b>	IHC,ICC/IF,ELISA
<b>Reactivity</b>	Human,Mouse
<b>Conjugation</b>	Unconjugated
<b>Modification</b>	Unmodified
<b>Isotype</b>	IgG
<b>Clonality</b>	Polyclonal
<b>Form</b>	Liquid
<b>Concentration</b>	1mg/ml
<b>Storage</b>	Aliquot and store at -20°C (valid for 12 months). Avoid freeze/thaw cycles.
<b>Shipping</b>	Ice bags
<b>Buffer</b>	Liquid in PBS containing 50% glycerol, 0.5% protective protein and 0.02% New type preservative N.
<b>Purification</b>	Affinity purification

**Application**

**Dilution Ratio** IHC 1:100-1:300,ICC/IF 1:200-1:1000,ELISA 1:10000-1:20000

**Molecular Weight**

**Antigen Information**

<b>Gene Name</b>	ZNF7
<b>Alternative Names</b>	ZNF7; KOX4; Zinc finger protein 7; Zinc finger protein HF.16; Zinc finger protein KOX4
<b>Gene ID</b>	7553.0
<b>SwissProt ID</b>	P17097
<b>Immunogen</b>	The antiserum was produced against synthesized peptide derived from human ZNF7. AA range:41-90

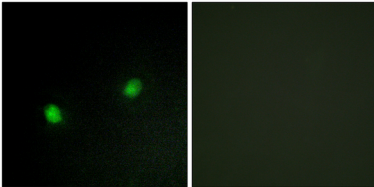
**Background**

function:May be involved in transcriptional regulation.,similarity:Belongs to the krueppel C2H2-type zinc-finger protein

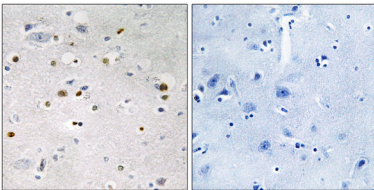
family.,similarity:Contains 1 KRAB domain.,similarity:Contains 15 C2H2-type zinc fingers.,tissue specificity:Ubiquitously present in many human cell lines of different embryological derivation.,function:May be involved in transcriptional regulation.,similarity:Belongs to the krueppel C2H2-type zinc-finger protein family.,similarity:Contains 1 KRAB domain.,similarity:Contains 15 C2H2-type zinc fingers.,tissue specificity:Ubiquitously present in many human cell lines of different embryological derivation.,

## Research Area

### Image Data



Immunofluorescence analysis of HeLa cells, using ZNF7 Antibody. The picture on the right is blocked with the synthesized peptide.



Immunohistochemistry analysis of paraffin-embedded human brain tissue, using ZNF7 Antibody. The picture on the right is blocked with the synthesized peptide.