

**Product Name: KOX17 Rabbit Polyclonal Antibody****Catalog #: APRab13092**

For research use only.

**Summary**

<b>Description</b>	Rabbit polyclonal Antibody
<b>Host</b>	Rabbit
<b>Application</b>	WB,IHC,ICC/IF,ELISA
<b>Reactivity</b>	Human,Mouse,Rat
<b>Conjugation</b>	Unconjugated
<b>Modification</b>	Unmodified
<b>Isotype</b>	IgG
<b>Clonality</b>	Polyclonal
<b>Form</b>	Liquid
<b>Concentration</b>	1mg/ml
<b>Storage</b>	Aliquot and store at -20°C (valid for 12 months). Avoid freeze/thaw cycles.
<b>Shipping</b>	Ice bags
<b>Buffer</b>	Liquid in PBS containing 50% glycerol, 0.5% protective protein and 0.02% New type preservative N.
<b>Purification</b>	Affinity purification

**Application**

<b>Dilution Ratio</b>	WB 1:500-1:2000,IHC 1:100-1:300,ICC/IF 1:50-1:200,ELISA 1:5000-1:20000
<b>Molecular Weight</b>	48kDa

**Antigen Information**

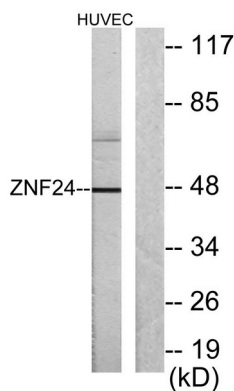
<b>Gene Name</b>	ZNF24 ZNF24; KOX17; ZNF191; ZSCAN3; Zinc finger protein 24; Retinoic acid suppression protein A;
<b>Alternative Names</b>	RSG-A; Zinc finger and SCAN domain-containing protein 3; Zinc finger protein 191; Zinc finger protein KOX17
<b>Gene ID</b>	7572.0
<b>SwissProt ID</b>	P17028
<b>Immunogen</b>	The antiserum was produced against synthesized peptide derived from human ZNF24. AA range:10-59

## Background

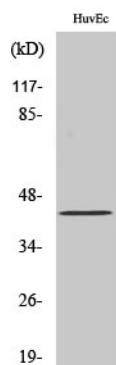
function:May function as a transcription factor. Seems to repress transcription.,PTM:Phosphorylated upon DNA damage, probably by ATM or ATR.,PTM:Sumoylated.,similarity:Belongs to the krueppel C2H2-type zinc-finger protein family.,similarity:Contains 1 SCAN box domain.,similarity:Contains 4 C2H2-type zinc fingers.,tissue specificity:Expressed in many tissues except in heart.,function:May function as a transcription factor. Seems to repress transcription.,PTM:Phosphorylated upon DNA damage, probably by ATM or ATR.,PTM:Sumoylated.,similarity:Belongs to the krueppel C2H2-type zinc-finger protein family.,similarity:Contains 1 SCAN box domain.,similarity:Contains 4 C2H2-type zinc fingers.,tissue specificity:Expressed in many tissues except in heart.,

## Research Area

## Image Data



Western blot analysis of lysates from HUVEC cells, using ZNF24 Antibody. The lane on the right is blocked with the synthesized peptide.



Western Blot analysis of various cells using KOX17 Polyclonal Antibody cells nucleus extracted by Minute TM Cytoplasmic and Nuclear Fractionation kit (SC-003, Invent biotech, MN, USA) .