
Product Name: KOR-1 Rabbit Polyclonal Antibody**Catalog #: APRab13090**

For research use only.

Summary

Description	Rabbit polyclonal Antibody
Host	Rabbit
Application	WB,IHC,ELISA
Reactivity	Human,Mouse,Rat,Monkey
Conjugation	Unconjugated
Modification	Unmodified
Isotype	IgG
Clonality	Polyclonal
Form	Liquid
Concentration	1mg/ml
Storage	Aliquot and store at -20°C (valid for 12 months). Avoid freeze/thaw cycles.
Shipping	Ice bags
Buffer	Liquid in PBS containing 50% glycerol, 0.5% protective protein and 0.02% New type preservative N.
Purification	Affinity purification

Application

Dilution Ratio	WB 1:500-1:2000,IHC 1:50-1:300,ELISA 1:2000-1:20000
Molecular Weight	48kDa

Antigen Information

Gene Name	OPRK1
Alternative Names	OPRK1; OPRK; Kappa-type opioid receptor; K-OR-1; KOR-1
Gene ID	4986.0
SwissProt ID	P41145
Immunogen	The antiserum was produced against synthesized peptide derived from human OPRK1. AA range:321-370

Background

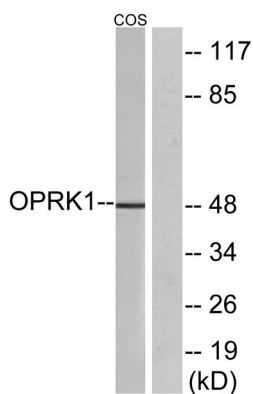
This gene encodes an opioid receptor, which is a member of the 7 transmembrane-spanning G protein-coupled receptor

family. It functions as a receptor for endogenous ligands, as well as a receptor for various synthetic opioids. Ligand binding results in inhibition of adenylate cyclase activity and neurotransmitter release. This opioid receptor plays a role in the perception of pain and mediating the hypolocomotor, analgesic and aversive actions of synthetic opioids. Variations in this gene have also been associated with alcohol dependence and opiate addiction. Alternatively spliced transcript variants encoding different isoforms have been found for this gene. A recent study provided evidence for translational readthrough in this gene and expression of an additional C-terminally extended isoform via the use of an alternative in-frame translation termination codon. [provided by RefSeq, Jan 2016],function:Inhibits neurotransmitter release by reducing calcium ion currents and increasing potassium ion conductance. Receptor for dynorphins. May play a role in arousal and regulation of autonomic and neuroendocrine functions.,online information:Kappa opioid receptor entry,similarity:Belongs to the G-protein coupled receptor 1 family.,subunit:Interacts with SLC9A3R1. Interacts with GABARAPL1.,

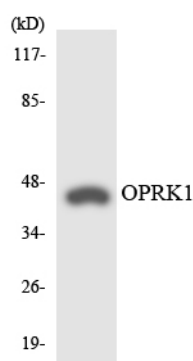
Research Area

Neuroactive ligand-receptor interaction;

Image Data



Western blot analysis of lysates from COS7 cells, using OPRK1 Antibody. The lane on the right is blocked with the synthesized peptide.



Western blot analysis of the lysates from HeLa cells using OPRK1 antibody.