

Product Name: KLHL3 Rabbit Polyclonal Antibody**Catalog #: APRab13069**

For research use only.

Summary

| | |
|----------------------|---|
| Description | Rabbit polyclonal Antibody |
| Host | Rabbit |
| Application | WB,IHC,ICC/IF,ELISA |
| Reactivity | Human,Rat,Mouse |
| Conjugation | Unconjugated |
| Modification | Unmodified |
| Isotype | IgG |
| Clonality | Polyclonal |
| Form | Liquid |
| Concentration | 1mg/ml |
| Storage | Aliquot and store at -20°C (valid for 12 months). Avoid freeze/thaw cycles. |
| Shipping | Ice bags |
| Buffer | Liquid in PBS containing 50% glycerol, 0.5% protective protein and 0.02% New type preservative N. |
| Purification | Affinity purification |

Application

| | |
|-------------------------|---|
| Dilution Ratio | WB 1:500-1:2000,IHC 1:100-1:300,ICC/IF 1:200-1:1000,ELISA 1:10000-1:20000 |
| Molecular Weight | 65kDa |

Antigen Information

| | |
|--------------------------|---|
| Gene Name | KLHL3 |
| Alternative Names | KLHL3; KIAA1129; Kelch-like protein 3 |
| Gene ID | 26249.0 |
| SwissProt ID | Q9UH77 |
| Immunogen | The antiserum was produced against synthesized peptide derived from human KLHL3. AA range:10-59 |

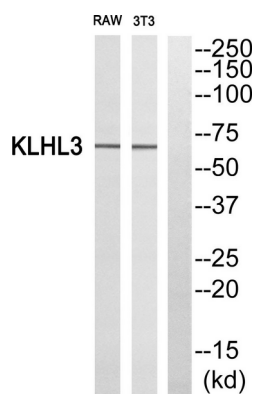
Background

This gene is ubiquitously expressed and encodes a full-length protein which has an N-terminal BTB domain followed by a BACK

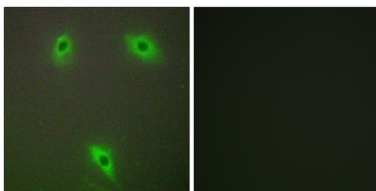
domain and six kelch-like repeats in the C-terminus. These kelch-like repeats promote substrate ubiquitination of bound proteins via interaction of the BTB domain with the CUL3 (cullin 3) component of a cullin-RING E3 ubiquitin ligase (CRL) complex. Mutations in this gene cause pseudohypoaldosteronism type IID (PHA2D); a rare Mendelian syndrome featuring hypertension, hyperkalaemia and metabolic acidosis. Alternative splicing results in multiple transcript variants encoding distinct isoforms. [provided by RefSeq, Mar 2012],function:Probable substrate-specific adapter of an E3 ubiquitin-protein ligase complex which mediates the ubiquitination and subsequent proteasomal degradation of target proteins.,pathway:Protein modification; protein ubiquitination.,similarity:Contains 1 BTB (POZ) domain.,similarity:Contains 6 Kelch repeats.,subunit:Interacts with cul3.,tissue specificity:Seems to be expressed in a variety of tissues.,

Research Area

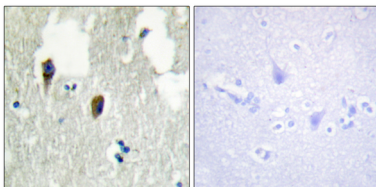
Image Data



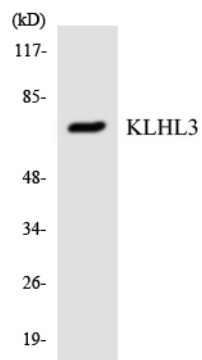
Western blot analysis of KLHL3 Antibody. The lane on the right is blocked with the KLHL3 peptide.



Immunofluorescence analysis of A549 cells, using KLHL3 Antibody. The picture on the right is blocked with the synthesized peptide.



Immunohistochemistry analysis of paraffin-embedded human brain tissue, using KLHL3 Antibody. The picture on the right is blocked with the synthesized peptide.



Western blot analysis of the lysates from COLO205 cells using KLHL3 antibody.