

Product Name: KLF8 Rabbit Polyclonal Antibody**Catalog #: APRab13064**

For research use only.

Summary

Description	Rabbit polyclonal Antibody
Host	Rabbit
Application	IHC, ICC/IF, ELISA
Reactivity	Human, Rat, Mouse
Conjugation	Unconjugated
Modification	Unmodified
Isotype	IgG
Clonality	Polyclonal
Form	Liquid
Concentration	1mg/ml
Storage	Aliquot and store at -20°C (valid for 12 months). Avoid freeze/thaw cycles.
Shipping	Ice bags
Buffer	Liquid in PBS containing 50% glycerol, 0.5% protective protein and 0.02% New type preservative N.
Purification	Affinity purification

Application

Dilution Ratio IHC 1:100-1:300, ICC/IF 1:50-1:200, ELISA 1:5000-1:20000

Molecular Weight

Antigen Information

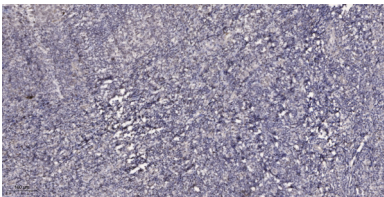
Gene Name	KLF8
Alternative Names	KLF8; BKLF3; ZNF741; Krueppel-like factor 8; Basic krueppel-like factor 3; Zinc finger protein 741
Gene ID	11279.0
SwissProt ID	O95600
Immunogen	The antiserum was produced against synthesized peptide derived from human KLF8. AA range:191-240

Background

This gene encodes a protein which is a member of the Sp/KLF family of transcription factors. Members of this family contain a C-terminal DNA-binding domain with three Kruppel-like zinc fingers. The encoded protein is thought to play an important role in the regulation of epithelial to mesenchymal transition, a process which occurs normally during development but also during metastasis. A pseudogene has been identified on chromosome 16. Alternative splicing results in multiple transcript variants. [provided by RefSeq, Apr 2009],function:Transcriptional repressor and activator. Binds to CACCC-boxes promoter elements. Also binds the GT-box of cyclin D1 promoter and mediates cell cycle progression at G(1) phase as a downstream target of focal adhesion kinase (FAK).,PTM:Sumoylation at Lys-67 represses transcriptional activity and reduces cell cycle progression into the G(1) phase. Has no effect on subcellular location.,similarity:Belongs to the Sp1 C2H2-type zinc-finger protein family.,similarity:Contains 3 C2H2-type zinc fingers.,subunit:Interacts with corepressor CtBP2. Interacts with PIAS1, PIAS2, AND PIAS4; the interaction with each ligase sumoylates KLF8.,tissue specificity:Ubiquitous.,

Research Area

Image Data



Immunohistochemical analysis of paraffin-embedded human tonsil. 1, Antibody was diluted at 1:200 (4° overnight) . 2, Tris-EDTA,pH9.0 was used for antigen retrieval. 3,Secondary antibody was diluted at 1:200 (room temperature, 45min) .