
Product Name: KIF4B Rabbit Polyclonal Antibody**Catalog #: APRab13016**

For research use only.

Summary

Description	Rabbit polyclonal Antibody
Host	Rabbit
Application	WB,ELISA
Reactivity	Human,Rat,Mouse
Conjugation	Unconjugated
Modification	Unmodified
Isotype	IgG
Clonality	Polyclonal
Form	Liquid
Concentration	1mg/ml
Storage	Aliquot and store at -20°C (valid for 12 months). Avoid freeze/thaw cycles.
Shipping	Ice bags
Buffer	Liquid in PBS containing 50% glycerol, and 0.02% New type preservative N.
Purification	Affinity purification

Application

Dilution Ratio	WB 1:500-1:2000,ELISA 1:5000-1:20000
Molecular Weight	135kDa

Antigen Information

Gene Name	KIF4B
Alternative Names	
Gene ID	285643.0
SwissProt ID	Q2VIQ3
Immunogen	Synthesized peptide derived from part region of human protein

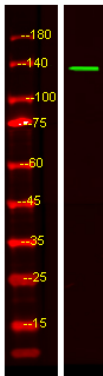
Background

kinesin family member 4B(KIF4B) Homo sapiens This gene is an intronless retrocopy of kinesin family member 4A. The protein encoded by this gene is a microtubule-based motor protein that plays vital roles in anaphase spindle dynamics and cytokinesis. [provided by RefSeq, Jul 2016],function:Motor protein that translocates PRC1 to the plus ends of interdigitating spindle

microtubules during the metaphase to anaphase transition, an essential step for the formation of an organized central spindle midzone and midbody and for successful cytokinesis. May play a role in mitotic chromosomal positioning and bipolar spindle stabilization.,sequence caution:Contaminating sequence. Potential poly-A sequence.,similarity:Belongs to the kinesin-like protein family.,similarity:Belongs to the kinesin-like protein family. Chromokinesin subfamily.,similarity:Contains 1 kinesin-motor domain.,subcellular location:Not present in the nucleolus. In early mitosis, associated with the mitotic spindle, in anaphase, localized to the spindle midzone and, in telophase and cytokinesis, to the midbody. In late cytokinesis, found in the center of the midbody. Associated with chromosomes at all stages of mitosis.,subunit:Interacts with unphosphorylated PRC1 during late mitosis.,tissue specificity:Highly expressed in hematopoietic tissues, fetal liver, spleen, thymus and adult thymus and bone marrow. Lower levels are found in heart, testis, kidney, colon and lung.,tissue specificity:Specifically expressed in testis.,

Research Area

Image Data



Western Blot analysis of HEK293 lysis, using primary antibody at 1:1000 dilution. Secondary antibody was diluted at 1:10000