
Product Name: KIF13B Rabbit Polyclonal Antibody**Catalog #: APRab13007**

For research use only.

Summary

Description	Rabbit polyclonal Antibody
Host	Rabbit
Application	WB,IHC,ICC/IF,ELISA
Reactivity	Human,Rat,Mouse
Conjugation	Unconjugated
Modification	Unmodified
Isotype	IgG
Clonality	Polyclonal
Form	Liquid
Concentration	1mg/ml
Storage	Aliquot and store at -20°C (valid for 12 months). Avoid freeze/thaw cycles.
Shipping	Ice bags
Buffer	Liquid in PBS containing 50% glycerol, 0.5% protective protein and 0.02% New type preservative N.
Purification	Affinity purification

Application

Dilution Ratio	WB 1:500-1:2000,IHC 1:100-1:300,ICC/IF 1:50-1:200,ELISA 1:5000-1:10000
Molecular Weight	202kDa

Antigen Information

Gene Name	KIF13B
Alternative Names	KIF13B; GAKIN; KIAA0639; Kinesin-like protein KIF13B; Kinesin-like protein GAKIN
Gene ID	23303.0
SwissProt ID	Q9NQT8
Immunogen	The antiserum was produced against synthesized peptide derived from human KIF13B. AA range:111-160

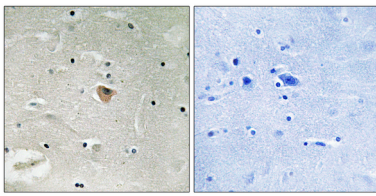
Background

function:May be involved in reorganization of the cortical cytoskeleton. May be functionally important for the intracellular

trafficking of MAGUKs and associated protein complexes.,PTM:Phosphorylated upon DNA damage, probably by ATM or ATR.,similarity:Belongs to the kinesin-like protein family.,similarity:Contains 1 CAP-Gly domain.,similarity:Contains 1 FHA domain.,similarity:Contains 1 kinesin-motor domain.,subunit:Binds to DLG1 and DLG4.,tissue specificity:Ubiquitous.,function:May be involved in reorganization of the cortical cytoskeleton. May be functionally important for the intracellular trafficking of MAGUKs and associated protein complexes.,PTM:Phosphorylated upon DNA damage, probably by ATM or ATR.,similarity:Belongs to the kinesin-like protein family.,similarity:Contains 1 CAP-Gly domain.,similarity:Contains 1 FHA domain.,similarity:Contains 1 kinesin-motor domain.,subunit:Binds to DLG1 and DLG4.,tissue specificity:Ubiquitous.,

Research Area

Image Data



Immunohistochemistry analysis of paraffin-embedded human brain, using KIF13B Antibody. The picture on the right is blocked with the synthesized peptide.