

Product Name: KG19 Rabbit Polyclonal Antibody**Catalog #: APRab12986**

For research use only.

Summary

Description	Rabbit polyclonal Antibody
Host	Rabbit
Application	WB,IHC,ICC/IF,ELISA
Reactivity	Human,Mouse
Conjugation	Unconjugated
Modification	Unmodified
Isotype	IgG
Clonality	Polyclonal
Form	Liquid
Concentration	1mg/ml
Storage	Aliquot and store at -20°C (valid for 12 months). Avoid freeze/thaw cycles.
Shipping	Ice bags
Buffer	Liquid in PBS containing 50% glycerol, 0.5% protective protein and 0.02% New type preservative N.
Purification	Affinity purification

Application

Dilution Ratio	WB 1:500-1:2000,IHC 1:100-1:300,ICC/IF 1:200-1:1000,ELISA 1:10000-1:20000
Molecular Weight	27kDa

Antigen Information

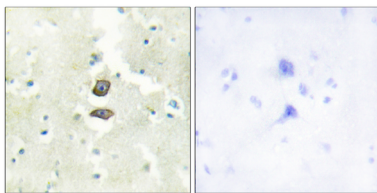
Gene Name	BRI3BP
Alternative Names	BRI3BP; KG19; BRI3-binding protein; I3-binding protein; Cervical cancer 1 proto-oncogene-binding protein KG19; HCCRBP-1
Gene ID	140707.0
SwissProt ID	Q8WY22
Immunogen	The antiserum was produced against synthesized peptide derived from human BRI3B. AA range:1-50

Background

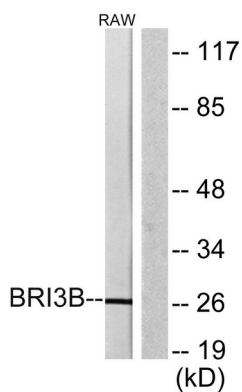
tissue specificity:Most abundantly expressed in brain, liver and kidney.,tissue specificity:Most abundantly expressed in brain, liver and kidney.,

Research Area

Image Data



Immunohistochemistry analysis of paraffin-embedded human brain tissue, using BRI3B Antibody. The picture on the right is blocked with the synthesized peptide.



Western blot analysis of lysates from RAW264.7 cells, using BRI3B Antibody. The lane on the right is blocked with the synthesized peptide.