

Product Name: Keratin 37/38 Rabbit Polyclonal Antibody**Catalog #: APRab12980**

For research use only.

Summary

Description	Rabbit polyclonal Antibody
Host	Rabbit
Application	WB,IHC,ELISA
Reactivity	Human,Rat,Mouse
Conjugation	Unconjugated
Modification	Unmodified
Isotype	IgG
Clonality	Polyclonal
Form	Liquid
Concentration	1mg/ml
Storage	Aliquot and store at -20°C (valid for 12 months). Avoid freeze/thaw cycles.
Shipping	Ice bags
Buffer	Liquid in PBS containing 50% glycerol, 0.5% protective protein and 0.02% New type preservative N.
Purification	Affinity purification

Application

Dilution Ratio	WB 1:500-1:2000,IHC 1:50-1:300,ELISA 1:2000-1:20000
Molecular Weight	50kDa

Antigen Information

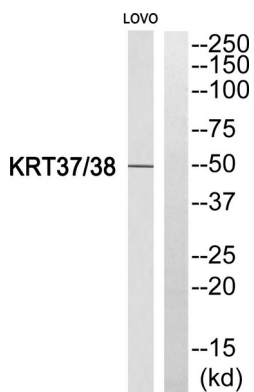
Gene Name	KRT37/KRT38 KRT37; HHA7; HKA7; KRTHA7; Keratin; type I cuticular Ha7; Hair keratin, type I Ha7; Keratin-
Alternative Names	37; K37; KRT38; HHA8; HKA8; KRTHA8; Keratin, type I cuticular Ha8; Hair keratin, type I Ha8; Keratin-38; K38
Gene ID	8688.0
SwissProt ID	O76014/O76015
Immunogen	The antiserum was produced against synthesized peptide derived from human KRT37/38. AA range:201-250

Background

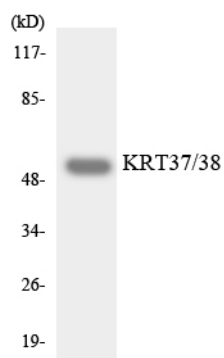
The protein encoded by this gene is a member of the keratin gene family. As a type I hair keratin, it is an acidic protein which heterodimerizes with type II keratins to form hair and nails. The type I hair keratins are clustered in a region of chromosome 17q12-q21 and have the same direction of transcription. [provided by RefSeq, Jul 2008],miscellaneous:There are two types of hair/microfibrillar keratin, I (acidic) and II (neutral to basic),similarity:Belongs to the intermediate filament family.,

Research Area

Image Data



Western blot analysis of KRT37/38 Antibody. The lane on the right is blocked with the KRT37/38 peptide.



Western blot analysis of the lysates from HepG2 cells using KRT37/38 antibody.