
Product Name: KDEL Receptor 3 Rabbit Polyclonal Antibody**Catalog #: APRab12961**

For research use only.

Summary

Description	Rabbit polyclonal Antibody
Host	Rabbit
Application	WB,IHC,ICC/IF,ELISA
Reactivity	Human,Mouse
Conjugation	Unconjugated
Modification	Unmodified
Isotype	IgG
Clonality	Polyclonal
Form	Liquid
Concentration	1mg/ml
Storage	Aliquot and store at -20°C (valid for 12 months). Avoid freeze/thaw cycles.
Shipping	Ice bags
Buffer	Liquid in PBS containing 50% glycerol, 0.5% protective protein and 0.02% New type preservative N.
Purification	Affinity purification

Application

Dilution Ratio	WB 1:500-1:2000,IHC 1:100-1:300,ICC/IF 1:50-1:200,ELISA 1:10000-1:20000
Molecular Weight	28kDa

Antigen Information

Gene Name	KDEL3
Alternative Names	KDEL3; ER lumen protein retaining receptor 3; KDEL endoplasmic reticulum protein retention receptor 3; KDEL receptor 3
Gene ID	11015.0
SwissProt ID	O43731
Immunogen	The antiserum was produced against synthesized peptide derived from human ERD23. AA range:61-110

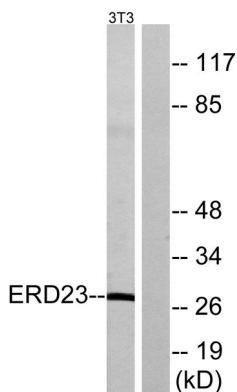
Background

KDEL endoplasmic reticulum protein retention receptor 3(KDEL3) Homo sapiens This gene encodes a member of the KDEL endoplasmic reticulum protein retention receptor family. Retention of resident soluble proteins in the lumen of the endoplasmic reticulum (ER) is achieved in both yeast and animal cells by their continual retrieval from the cis-Golgi, or a pre-Golgi compartment. Sorting of these proteins is dependent on a C-terminal tetrapeptide signal, usually lys-asp-glu-leu (KDEL) in animal cells, and his-asp-glu-leu (HDEL) in *S. cerevisiae*. This process is mediated by a receptor that recognizes, and binds the tetrapeptide-containing protein, and returns it to the ER. In yeast, the sorting receptor encoded by a single gene, ERD2, is a seven-transmembrane protein. Unlike yeast, several human homologs of the ERD2 gene, constituting the KDEL receptor gene family, have been described. KDEL3 was the third member of the family to be identified. Altfunction:Required for the retention of luminal endoplasmic reticulum proteins. Determines the specificity of the luminal ER protein retention system. Also required for normal vesicular traffic through the Golgi. This receptor recognizes K-D-E-L.,similarity:Belongs to the ERD2 family.,

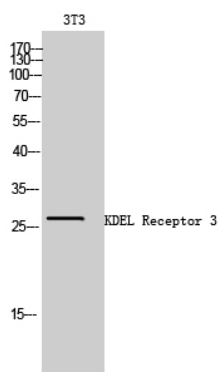
Research Area

Vibrio cholerae infection;

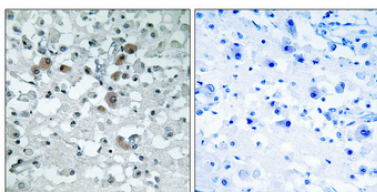
Image Data



Western blot analysis of lysates from NIH/3T3 cells, using ERD23 Antibody. The lane on the right is blocked with the synthesized peptide.



Western Blot analysis of 3T3 cells using KDEL Receptor 3 Polyclonal Antibody



Immunohistochemical analysis of paraffin-embedded Human brain. Antibody was diluted at 1:100 (4° overnight). High-pressure and temperature Tris-EDTA, pH 8.0 was used for antigen retrieval. Negative control (right) obtained from antibody was pre-absorbed by immunogen peptide.

