

Product Name: KCNS1 Rabbit Polyclonal Antibody**Catalog #: APRab12950**

For research use only.

Summary

Description	Rabbit polyclonal Antibody
Host	Rabbit
Application	WB,ELISA
Reactivity	Human,Rat,Mouse
Conjugation	Unconjugated
Modification	Unmodified
Isotype	IgG
Clonality	Polyclonal
Form	Liquid
Concentration	1mg/ml
Storage	Aliquot and store at -20°C (valid for 12 months). Avoid freeze/thaw cycles.
Shipping	Ice bags
Buffer	Liquid in PBS containing 50% glycerol, and 0.02% New type preservative N.
Purification	Affinity purification

Application

Dilution Ratio	WB 1:500-1:2000,ELISA 1:5000-1:20000
Molecular Weight	57kDa

Antigen Information

Gene Name	KCNS1
Alternative Names	
Gene ID	3787.0
SwissProt ID	Q96KK3
Immunogen	Synthesized peptide derived from human protein . at AA range: 470-550

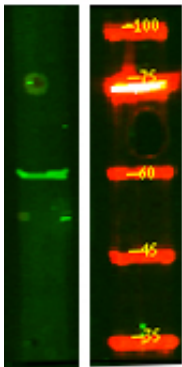
Background

Voltage-gated potassium channels form the largest and most diversified class of ion channels and are present in both excitable and nonexcitable cells. Their main functions are associated with the regulation of the resting membrane potential and the control of the shape and frequency of action potentials. The alpha subunits are of 2 types: those that are functional by

themselves and those that are electrically silent but capable of modulating the activity of specific functional alpha subunits. The protein encoded by this gene is not functional by itself but can form heteromultimers with member 1 and with member 2 (and possibly other members) of the Shab-related subfamily of potassium voltage-gated channel proteins. This gene belongs to the S subfamily of the potassium channel family. [provided by RefSeq, Jul 2008],domain:The segment S4 is probably the voltage-sensor and is characterized by a series of positively charged amino acids at every third position.,function:Potassium channel subunit. Modulates channel activity and reduces the ion flow.,similarity:Belongs to the potassium channel family. S subfamily.,subcellular location:May not reach the plasma membrane but remain in an intracellular compartment in the absence of KCNB1.,subunit:Heteromultimer with KCNB1 and with KCNB2. Does not form homomultimers. Might also bind to other channel proteins.,tissue specificity:Detected in all tissues tested with the exception of skeletal muscle. Highly expressed in adult and fetal brain, fetal kidney and lung, and adult prostate and testis.,

Research Area

Image Data



Western Blot analysis of HEK293 lysis, using primary antibody at 1:1000 dilution. Secondary antibody was diluted at 1:10000